

The weather

Mostly sunny skies, high upper 30s to low 40s. Fair tonight with lows in upper 20s. Variable cloudiness Friday with high near 50. National weather forecast map on page 17.

Manchester Evening Herald

Manchester—A City of Village Charm

Inside today

Area news 8, 9, 13, 15, 16, 20
Business 16 Editorial 6
Classified 16, 17, 18 Family 7
Comics 19 Obituaries 10
Dear Abby 19 Sports 10, 11

MANCHESTER, CONN., THURSDAY, FEBRUARY 12, 1976 — VOL. XCV, No. 113

TWENTY PAGES — TWO SECTIONS

PRICE: FIFTEEN CENTS

News summary

Compiled from United Press International

State

NEW HAVEN — The Shelton firebombing trial ended Wednesday when U. S. Judge Jon O. Newman declared a mistrial when the jury could not reach a verdict on the last of nine defendants, Michael Tiche, 23, of Boyers, Pa. Six defendants were convicted and two others acquitted by the jury in a month of deliberations in the case which stemmed from an \$11 million fire in a rubber products factory last March 1.

HARTFORD — A measure allowing Connecticut to spend \$38.6 million more than the \$1.68 billion approved for this year has cleared the legislative Appropriations Committee. Public hearings will be scheduled before another committee vote is taken.

HARTFORD — Two Democratic presidential candidates laid the foundation for future visits by touching political bases in Connecticut Wednesday. Sen. Birch Bayh, D-Ind., visited the Capitol lobbying Democratic leaders and meeting with Gov. Ella T. Grasso en route to New Haven and former Georgia Gov. Jimmy Carter flew into Hartford for a news conference on his way to Florida where he faces Alabama Gov. George Wallace in what is considered a key test for both.

Regional

BOSTON — Right-to-Life Democratic presidential candidate Ellen McCormack will make her first major appearance in Massachusetts Feb. 17 with a news conference followed by a torchlight rally at historic King's Church.

MONTPELIER, Vt. — Despite supporters' arguments that it would be self-sustaining, Secretary of State Richard Thomas will ask the legislature for a \$2,500 supplemental appropriation to finance Vermont's March 2 presidential primary election.

National

WASHINGTON — White House sources say former Gov. William Scranton of Pennsylvania is being considered to replace Daniel P. Moynihan as U. S. ambassador to the United Nations. Scranton, 58, once served as a special assistant to Secretary of State John Foster Dulles during the Eisenhower administration.

SAN FRANCISCO — The prosecution in Patricia Hearst's trial, bolstered by a judge's ruling she "voluntarily" confessed to a bank robbery, has just about wrapped up its case.

WASHINGTON — Secretary of State Henry Kissinger recently offered the Soviet Union a softer strategic arms proposal than had been approved by the National Security Council and has been facing increasing criticism from the NSC ever since.

WASHINGTON — The Civil Aeronautics Board has proposed a new travel bonanza — a charter flight with no minimum price and no requirement to pay for hotels or meals as part of a tour package.

International

ANGOLA — Soviet-backed forces in Angola have claimed the capture of Silva Porto, the last major outpost of pro-Western troops.

LONDON — Frank Stagg, a convicted Irish Republican Army prisoner, died in Wakefield Jail today on the 61st day of a hunger strike. The IRA has warned his death would bring reprisals.

Freedom of choice, protection issues at hearing on fire district limit bill

By DOUG BEVINS
Herald Reporter

The question of adequate fire protection and the right to freedom of choice were the main issues debated in a legislative hearing Wednesday on a proposed bill which would prohibit further expansion of

Manchester's Eighth Utilities District.

Town and district officials and residents aired the pros and cons of the proposal in a two-hour public hearing conducted by the General Assembly's Government Administration and Policy Committee.

The State Capitol hearing, at times clouded by emotional charges about fire department competition in Manchester, ended with indications that the committee will closely scrutinize the proposed bill.

The proposal, by State Rep. Ted Cummings (D-12th District) of Manchester, would prohibit expansion of the Eighth Utilities District

into areas now in town jurisdiction. It wouldn't affect the question of who is responsible for the Buckland area, which is up to the courts, Cummings said.

Cummings, leading off testimony on the bill at Wednesday's hearing, said his proposal is an amendment to Special Act 200 of 1963, which spells out procedure for Eighth District expansion.

Cummings, asking the committee to act favorably and bring the bill out of committee, said the amendment would promote good sense and cooperation between the Town Fire Department and the Eighth District Fire Department. He said the current inter-departmental competition has become dangerous.

Town Director John Thompson said the town wants to "protect the integrity of its geographical boundaries."

"Any further encroachment by the district would be a threat to public safety," Thompson said.

Asst. Town Manager Charles McCarthy, mentioning an apparent breakdown in cooperation between the two fire departments, said Cummings' amendment would stabilize the now-confusing fire protection situation.

Harold Pohl, a town fire fighter and head of the local fire fighters union, called for approval of the bill to protect the Town Fire District tax base and, ultimately, the jobs of town fire fighters. Pohl said district expansion would mean reduced town fire taxes, which would mean a reduction in the town department's paid force.

An Eighth District resident favoring the bill, Leon Tranchemontagne of 10 Ambassador Dr., was one of several speakers citing confusion about fire protection responsibility.

Tranchemontagne was one of several Ambassador Dr. residents who last year petitioned the Town of Manchester to assume fire service in their area. The petition didn't succeed, he said, because Special Act 200 allows only the district to expand, not the town.

Others speaking in favor of the bill were Town Fire Chief John Rivosa, Registrar of Voters Herbert Stevenson, John Sullivan, and Buckland resident Stephen Penny. Several town fire fighters attended the hearing but didn't speak.

Leading the opposition to the bill at the hearing was Eighth District Fire Lt. Wallace Irish Jr., a leader in attempts to expand the district.

In a lengthy presentation cut short by the committee, Irish said the dispute between the town and the district should be settled in Manchester, not in the General Assembly.

When Irish began to criticize Cummings, his one-time political opponent, Committee Chairman Ray-

mond Dzialo, representative from Middletown, stopped Irish's testimony.

Atty. Robert Bletchman, representing Buckland resident Larry Noone in one of the pending Superior Court lawsuits, said Cummings' proposed bill is premature and violates a state statute which sets procedure for legislation affecting municipalities.

Bletchman's law partner, Christopher Noble, cited the same statute — Section 2-14 — which states that the General Assembly can't enact special legislation dealing with powers, organization or form of local governments unless the local government requests the legislation.

Bletchman and Noble say the Eighth Utilities District is a local government, in effect a "municipality within a municipality."

Atty. Laurence Rubinow, representing the district, summarizing arguments against the proposed bill, said it's an indirect attempt by the Town of Manchester for consolidation.

Rubinow said Cummings' proposal is deficient because it technically eliminates from Special Act 200 the method for district expansion, without setting a new procedure. Rubinow said the bill is an attempt to encroach on the judicial process, is unconstitutional, and would eliminate the people's right to petition and the people's freedom of choice.

Rubinow's last point was echoed by other opponents of the bill, including Burton D. Pearl, a former district director, who said the question of expansion should be decided by the district residents.

Other opponents speaking at the hearing were Eighth District President Michael Massaro, District Fire Chief Granville Lingard, and Thomas Moore, a district fire fighter.

Cummings said the committee has a March 10 deadline for reporting on proposed special acts, and he thinks his proposal has a 50-50 chance. He said the committee has indicated it will thoroughly review the proposal, and committee members say they'll have to be "100 per cent sure" before they recommend anything.

"If this accomplished nothing else," Cummings said after the hearing, "it brought both sides together into one room so each could hear and reflect on the other's position. It's bound to result in greater cooperation," he said.

Bill would change act's language

The bill proposed by State Rep. Ted Cummings (D-12th District) of Manchester would change the language in one section of Special Act 200 of 1963, the legislation which authorized the territory for the Eighth Utilities District in the Town of Manchester.

The 1963 act states: "The present district boundary lines may be extended, within the territory authorized to be serviced by this act, upon the application of a majority of owners of real property in the additional area to be served, and such district boundary lines may be extended by vote of the legislative body of the district when either sewer facilities and services or fire protection shall be furnished to such additional territory."

Cummings' proposed bill would amend that section by eliminating most of the provisions and substituting: "The present district boundary lines shall not be extended beyond the territory authorized to be serviced on and after the effective date of this act."



Major chain to close down stores

The W. T. Grant Co., one of the nation's largest general merchandisers, is seeking federal court permission to declare bankruptcy and close down its remaining stores, mainly in New England. Shown is the firm's store in Vernon. Also slated for closing is the store located in the Manchester Parkade. (Herald file photo)

Closing of two area Grant stores would affect over 100 workers

By ALICE EVANS
Herald Reporter

If a federal bankruptcy court judge permits the W. T. Grant Co. to close its books, 32 retail stores in Connecticut, including those at Manchester Shopping Parkade and Vernon Circle, will shut their doors within a month, and 1,500 state residents will be unemployed.

Through the managers of the Parkade and Vernon stores said they would make no comment when contacted this morning, about 25 employees at the Parkade store, and 80 at the Vernon Circle store will be out of work according to reports from other sources.

The firm, which began with a single store in Lynn, Mass., in 1906,

Wednesday asked Judge John Galgay to declare it bankrupt. The hearing was due to continue today.

Five Connecticut stores were closed last October after Grant filed a voluntary bankruptcy petition Oct. 2 to try and reorganize and pay off its debts.

The large Grant Store in Vernon increased its floor space since it opened at the Tri-City Shopping area about 10 years ago.

The closing of the store will mean some 80 employees will be put out of work. Many of them are part-time workers. Earlier last year the store employed about 110 people.

The store has gradually reduced its stock as well as its staff over the past several months although the news of

the store's closing came as a surprise to employees.

The former Grant Store in Rockville Center was one of five Grant stores in Connecticut closed down last October.

Several weeks ago the Vernon store announced it was closing out its furniture department. Ken Durand, manager of the department, has since opened his own furniture store on Rt. 83 in the Benoit Shopping Center.

Joseph Paradis, manager of the Vernon store, contacted today, said he had no comment. It is not known exactly when the store will close its doors.

Chain eyed by three big merchandisers

NEW YORK (UPI) — Three large merchandising concerns today were reported to be interested in buying the W. T. Grant & Co. Hearings on a proposal to liquidate the variety store chain currently are under way before federal bankruptcy Judge John Galgay.

There was no immediate confirmation from any of the three firms, Montgomery Ward of Chicago, S.S. Kresge of Detroit and Greyhound Corp. of Phoenix, which owns bus lines and the Armour meat and food combine.

Testimony at the bankruptcy

hearing Wednesday revealed that Grant has closed 34 more stores and now has only 359 with 24,000 employees.

A formal ruling by Judge Galgay that Grant must be liquidated would not preclude a sale of the remaining stores to another company.

Grant's attorneys threw in the towel Wednesday and said they would not oppose liquidation but counsel for the Securities and Exchange Commission asked Judge Galgay to hear more evidence.

Grant filed a voluntary bankruptcy petition Oct. 2 in an effort to remain

in business while it tried to reorganize and repay its debts.

Since then, Grant has reduced the number of its employees by more than half to about 30,000, withdrawn its operations from the West Coast, the Midwest and the Southwest, and closed 712 stores.

If the judge approves the bankruptcy motion the chain would close its last 393 stores, which are concentrated in the Northeast.

Leonard Rosen, a lawyer for the chain, said it would take a generation to restore the financially crippled firm. "While the operation is going on," he added, "this patient may very well die."

Harvey Miller, representing the creditors' committee, said that as of Jan. 29 W. T. Grant's assets amounted to \$512 million and its

liabilities, \$1.1 billion.

"Our consultants estimate it will take \$150 million to \$160 million to go forward," he said.

"It is in the best interest of all creditors that W. T. Grant be adjudged bankrupt and that its business be terminated," Miller said. "The possibility of reorganization in light of the tremendous cash needs is very, very remote."

Marvin Jacobs, a lawyer for the Securities and Exchange Commission, told the court he was puzzled by the turn in events that led to the bankruptcy resolution.

"Only a few days ago," he said, "W. T. Grant was thought to be a viable operation."

Grant's stockholders, he said, are entitled to more information as to "what has happened to destroy this viability."

Police officer struck by unknown assailant

A Manchester police officer, Audrey Paradis, suffered minor head injuries Wednesday night when she was knocked out while checking suspicious activity on E. Middle Tpke., police reported today.

Miss Paradis, one of two local women patrol officers, was examined and treated at Manchester Memorial Hospital's emergency room. She was released but isn't expected to return to work for a few days.

Police said Officer Paradis was on routine patrol on E. Middle Tpke. at about 10:30 p.m., when she observed someone walking to the rear of the

Sunset Service Station at the corner of Vernon St.

The officer left her car to investigate, police said, and when she went to the rear of the service station she was hit over the head with a blunt object. Police said she didn't see her assailant.

Patrol Capt. Richard Sartor said it appeared that Officer Paradis had stopped an apparent burglary or theft attempt, although the motive for the assault isn't known. There were no signs of a break into the service station.

An extensive search of the neighborhood was unsuccessful, police said. Investigation is continuing.

Town has water main woes

What was thought to be a water main break Wednesday on Center St., opposite Knox St., turned out to be only surface water, backing up from a storm drain and bubbling through the pavement.

However, there was a water main break early this morning at Barry and Saulters Rds. Discovered at 3 a.m. by a policeman on cruiser duty, it was called in to the water department.

About 50 families were without water for about two hours during early morning hours, but probably didn't even know it. Repairs were made at

daybreak and completed at about 8 a.m.

The water on Center St. was reported by a resident of the area about 11:30 a.m. The water was shut off for about an hour to about 20 residences in the Knox St. area and intermittently for several minutes at a time to other residences, as town crews searched for the problem.

After drilling holes in several locations and checking the water, the crews determined the problem was surface water, similar to an occurrence about two weeks ago at

Center and Winter Sts.

Samples of the water were tested for chlorine and fluoride and were found not to contain them. The town's water supply is treated with chlorides and fluorides.

During part of the afternoon, east-bound traffic on Center St. was detoured by way of New St. and Garden St. When water department personnel checked the situation after sunset, they found that the water had drained off and the situation had been stabilized.

1
2
F
E
B
1
2

Barker family awarded \$103,500 in fatality

The family of Kenneth L. Barker, a 44-year-old Manchester policeman who was killed last year in an automobile accident on Interstate 91 in Hartford, has been awarded \$103,500 in damages.

Judge Jay E. Rubinow entered a stipulated judgment in Tolland County Superior Court Wednesday ordering a Massachusetts truck driver to pay the money to Barker's widow, Wilma P. Barker, and the two Barker children.

Barker died Aug. 27 after a large flatbed truck, driven by Bruce D. Stephens of West Concord, Mass., hit the Barker car on a ramp connecting Interstate 91 to I-84. Barker was pronounced dead at the scene after crews worked nearly an hour to free

YESTERDAYS

him and the driver of the car, 62-year-old Charles J. O'Brien of E. Middle Tpke. Barker's two children were passengers in the back seat.

O'Brien, who survived the crash, is seeking \$375,000 from Stephens in another lawsuit.

The two children, 17-year-old David M. Barker and 20-year-old Sandra Lee Barker, were freed by passersby who cut through the convertible roof to reach them.

The suit was filed by the Barker children and Mrs. Barker of 86 Falkner Dr.

Barker was with the Manchester Police Department for 20 years.

25 years ago
Civilian Defense aircraft spotters man observation post on roof of Odd Fellows building for 16 hours as part of a statewide test of air defenses.

Manchester Boy Scouts collect about \$3,000 in townwide financial drive.

Capacity audience fills State Theater for the 24th annual Police Aid Association show featuring 10 vaudeville acts from New York City, obtained by Patrolman Theodore L. Fairbanks, president of the association, and Jack Sanson, manager of the theater.

A grand total of 60 patients are discharged from Manchester Memorial Hospital Saturday and Sunday, ranking high in all-time list for a 48 hour period.

10 years ago
Philip Dine, manager of House & Hale, is re-elected chairman of the Chamber of Commerce Retail Division.

pottery shed

love is a gift from pottery shed

WEST HARTFORD
Bishop's Corner
2531 Albany Ave
OPEN MON. - SAT. 11-5

WETHERSFIELD
965 Silas Drake
Highway
OPEN MON. - SAT. 11-5

MANCHESTER
391A Broad St.
OPEN EVERY NIGHT
10-9 SAT. 10-9

HAVE A HAPPY VALENTINE'S DAY WHILE ATTENDING THE 10th ANNUAL EAST HARTFORD ANTIQUE FLEA MARKET

THE EAST HARTFORD HIGH SCHOOL
Burrage Ave., East Hartford, Conn.
SAT., FEB. 14th, 10 A.M. - 10 P.M.
SUN., FEB. 15th, 11 A.M. - 6 P.M.

THE EAST HARTFORD ANTIQUE FLEA MARKET
HOME COOKED FOOD AVAILABLE BY THE EXHIBITORS
DONATIONS \$1.50
BUT WITH THIS \$1.25 ADMISSION \$1.25
FREE OF CHARGE TO CHILDREN UNDER 12

Heart Fund roses on sale tomorrow

A rose by any other name will be a Heart Fund rose which will be available to the public by the dozens Friday in various locations in Manchester.

There will be 500 roses for sale to help the Manchester Heart Fund drive available at the following places from 11 a.m. till all are sold:

Frank's Supermarket at 725 E. Middle Tpke., Highland Park Market at 317 Highland St., the Parkade and Main St. branches of the Savings Bank of Manchester, Stop and Shop Supermarket at 263 W. Middle Tpke., Manchester State Bank at 1041 Main St. and the Hartford National Bank & Trust Co. at 395 Main St.

The roses will be sold at \$1 each.

Make Friday the 13th a lucky day for someone by buying a rose.

REVIEW: Waters' new play is masterful

CAPE COD STANDARD TIMES
"Waters' contribution to the play is masterful... it reflects the early days of the Cape Cod... it is a lovely work in the new world."

The Tisherman's Players
Sir And William Penn

Friday, February 13th
8:00 P.M.
(Feb. 14th Same time)

Tickets: \$2.50
\$4.00
\$6.00
\$8.00

Call us about: 643-7444

THE BIRTHPANGS OF RELIGIOUS LIBERTY

Dateline 1776

By United Press International
NEW YORK, Feb. 12 — British Gen. Clinton departed from the city harbor for his southern expedition without trying to land the 200 British

regulars aboard in one transport. Local residents, however, complained New Englanders were preventing any moves toward reconciliation with their mother country.

THEATRE SCHEDULE

UA East 1 — "The Hindenburg" 2:00-7:00-9:15
UA East 2 — "No Deposit No Return" 1:30-4:00-6:45-9:15
UA East 3 — "No Deposit No Return" 12:15-2:45; "Man Who Would Be King" 7:00-9:15
Vernon Cinema 1 — "If You Don't Stop It" 7:00-9:30-10:30
Cinema 2 — "Hustle" 7:30-9:30

Barclays 1 — "Sweep Away" 7:15-9:20
Barclays 2 — "Blue Water White Death" 2:00; "Black Bird" 7:15-9:00
Showcase Cinema 1 — "Barry Lyndon" 9:00-8:15

Showcase Cinema 2 — "One Flew Over the Cuckoo's Nest" 2:00-4:30-7:00-9:30
Showcase Cinema 3 — "Dog Day Afternoon" 2:00-4:35-7:00-9:30
Showcase Cinema 4 — "Sherlock Holmes' Smarter Brother" 2:15-4:05-5:55-7:50-9:45

Manchester Evening Herald
Published every evening except Sundays and holidays. Entered at the Manchester, Conn., Post Office as Second Class Mail Matter. Suggested Carrier Rates:
Payable in Advance
Single copy... \$1.50
One month... \$13.50
Three months... \$37.50
Six months... \$70.50
One year... \$135.00
Mail Rates Upon Request
Subscribers who fail to receive their newspaper before 5:30 p.m. should telephone the circulation department, 643-9246.

UA THEATRES EAST

1 "The Hindenburg" PG
2 "WALT DISNEY NO DEPOSIT NO RETURN" PG
3 "The Man Who Would Be King" PG

SHOWCASE CINEMAS 1234

1-84 EXIT 59 - SILVER LAKE - ROBERTS ST.
EAST HARTFORD • 24HR. TEL. INFO. 586-0810
FREE LIGHTED PARKING - We Honor MASTER CHARGE

BARRY LYNDON
JACK NICHOLSON
ONE FLEW OVER THE CUCKOO'S NEST
MICHAEL CAIN
SHERLOCK HOLMES' SMARTER BROTHER
AL PACINO
THE MAN WHO WOULD BE KING
ROBERT REDFORD

How to Be RICH, FAMOUS and THIN

LESSON 1. How to be Rich
Simply take advantage of our Bona-fide-lowest-in-New England Bargain prices! We check and recheck every price on every item. Then take the money you saved, invest it and get rich!

LESSON 2. How to be Famous
Inform your friends (some people call it bragging) about how you beat the establishment by shopping in our Mad Merchandise Circus. You'll be instantly recognized as a clever shopper, a smart investor and a connoisseur of good value. The world will be beat a path to your door seeking advice and personal loans.

LESSON 3. How to be Thin
This will occur automatically when you climb up and down the stairs and jog through our aisles luging home boxes of bargains... and by drinking our delicious complimentary "Meal-in-tiself" coffee.

CRISTY Spray De-Icer
14 oz. can Their 79c OUR 56c

GLADDING Intrepid FISHING REELS
3 to 1 ratio 220 yds. 6 lb. test their \$14 to \$16 \$476

AUTO SHOCK ABSORBERS
to fit most CARS
OUR \$1.50 each

WINE MAKING KITS
to make 5 gallons
Everything Except The Yeast \$11.99 OUR \$3.97

12 BAND Batt. or Elec. "World Monitor" Portable RADIO
Their \$159.95 OUR \$99.00

CHILDREN'S SHOES
Their \$49.50 OUR \$14.99

SAVE 40 to 50% ON BRAND NAME DOMESTICS
Their \$49.95 OUR \$28.00

G.E. TRACK DECKS
Factory serviced and guaranteed.
Their \$49.95 OUR \$28.00

SHREDDED FOAM
for pillows, toys and handicrafts. Their \$1.39 69c lb.

The Little Theatre of Manchester, Inc.

FINAL CASTING

"The Rose Tattoo"
Friday, Feb. 13
8 P.M. - 17th Rooms
22 Oak Street
24 roles - all ages

BURT REYNOLDS "HUSTLE"
EVER 7:30 & 9:30
SAT. MON. MAX 2:00
SUNDAY 4:15 7:30 9:30

Vernon Cine 1 & 2
1:30 7:00 9:30
1:30 7:00 9:30

IF YOU DON'T STOP IT
7:00 8:30 10:30

SAT. SUN. MON. HOOK SHOW "HEIDI AND PETER"
SHOWN 1:15 & 3:00 PM

MATINEES THRU FEB. 2 P.M. "BLUE WATER, WHITE DEATH"
AL. MATINEES FEB. 12

BURNISIDE 1 & 2
1:30 7:00 9:30
1:30 7:00 9:30

"ONE OF THE YEARS TO BE SWEEP AWAY"
A 11:30

GEORGE SEGAL "BLACK BIRD"
PG 7:15 9:00

AND MATINEES SAT. - SUN. MON. "HEIDI AND PETER"
AT 1 & 3 P.M. 2 P.M.
"BLUE WATER, WHITE DEATH"
AT 1 & 3 P.M. 2 P.M.

Sandwich Specials

ENGLISH ROAST BEEF • VIRGINIA HAM CORNED BEEF

Cut to your order, served on Old Fashioned Rye or Herb breads, Potato Salad, Pickles

\$2.50

Delicious with Heineken, Michelob or British Nut Brown Whitbread Ale

MORSELS

Saloon & Oyster Bar

Covey's of Manchester
45 E. Center St., 643-2751

ARMSTRONG DOW FLOOR
No Wax Vinyl FLOOR COVERING
Elsewhere up to \$10 sq. yd. \$2.90 sq. yd.

Sunshine KRACKLIN DOG FOOD
25 lb. bag \$3.49

Assemble Yourself Inexpensive BAR STOOL
Their \$49.50 OUR \$14.99

500 SHEETS Facial Quality PAPER TOWELS
500 sheets 2 for 79c

SAVE 40 to 50% ON BRAND NAME DOMESTICS

FOOD
Per Pound 100 lb. \$24.00
Fountain Candy 2 lb. \$1.00
Sunshine 15 oz. \$1.00
Fruitful Cat Food 6 lb. \$1.00
Normal Water, 4 1/2 gal. \$1.00

SHREDDED FOAM
for pillows, toys and handicrafts. Their \$1.39 69c lb.

OPEN THURS. 6-9 FRIDAYS 10-9 SAT. 10-5

CORNER HARTFORD RD. & PINE ST., MANCHESTER • 649-7782

About Town

Manchester Young Marines will meet tonight at 7 at Howell Cheney Regional Technical School.

Manchester Composite Squadron of the Civil Air Patrol will meet tonight from 7 to 9:30 at the Manchester State Armory.

The meeting is open to all young people from Grade 7 through high school. More information may be obtained by calling 646-6344 or 675-6870.

Mayfair Gardens will have a potluck Friday at 6 p.m. in Cronin Hall. All residents are invited and asked to bring place settings.

Al-Anon family groups will meet tonight at 8 at Pathfinders Club, 102 Norman St., and Friday at 10 a.m. at South United Methodist Church campus.

The prudent board of Center Congregational Church will meet tonight at 7:30 in the Robbins Room of the church.

The executive board of the United Methodist Women of South Church

FREE

1/2 PRICE ADMISSION TICKETS TO THE 1976 SPRINGFIELD CAMP SHOW

AVAILABLE AT FARR'S SHOW DATES FRI., FEB. 13th TO MON., FEB. 16th AT THE EASTERN STATES EXPO GROUNDS WEST SPRINGFIELD, MASS. FREE TICKETS NOW AT FARR'S 2 MAIN ST. MANCHESTER Tel 643-7111

Jehovah's Witnesses will have a theocratic ministry school and service meeting tonight at 7:30 at the Manchester State Armory.

An Adult Bible Study Hour will be conducted Friday at 1:30 p.m. in the Reception Room at Emmanuel Lutheran Church by Herman V. Johnson.

St. Stephen's Prayer Group of St. Mary's Episcopal Church will meet tonight at 8 at the church.

The board of trustees of Second Congregational Church will meet tonight at 7:30 in the church parlor.

The prudent board of Center Congregational Church will meet tonight at 7:30 in the Robbins Room of the church.

The executive board of the United Methodist Women of South Church

VITTNER'S GARDEN CENTER, INC.

1 TOLLAND TPKE. — 649-2623

OPEN 7 DAYS A WEEK

Mon.-Sat. 9-5 Sun. 11-4

WE WILL HAVE CUT FLOWERS & PLANTS FOR VALENTINE DAY

ROSES CARNATIONS DAISIES ARRANGEMENTS AZALEA PLANTS PLUS MANY OTHERS

AT CASH & CARRY PRICES

Read Herald Ads

Jury's Tavern

"Visit a Historical Site" "Enjoy a Bicentennial Meal" "Receive a Bicentennial Dollar"

We're giving away a Bicentennial Dollar with each specially prepared Bicentennial Dinner. (choice of three) every night except Sat.

Town seeking sweeper bids

It may be winter on the calendar and in the clouds and but, insofar as the Manchester highway department is concerned, spring looms on the horizon.

The department is seeking bids for renting street sweeping equipment and for contracting for the sweeping of the town's parking lots. The bids will be opened Feb. 27 in the Municipal Building.

Parking lots will be swept between 5 a.m. and 9 a.m. only — Mondays through Fridays.

The contractor will furnish the equipment and the men for sweeping the Birch St. parking lot, Main Forest Sts. parking lot, Purnell parking lot, St. James Church-Park St. parking lot, and the parking lots between Oak and Maple Sts.

As in previous years, all of the town's streets and highways will be swept at least once.

A starting date for the street-sweeping operation hasn't been released.

Sears LINCOLN'S BIRTHDAY BUYS

SALE ENDS SATURDAY Most Items at Reduced Prices

\$60 OFF 100% solid-state table model color TV Regular \$499.99 **419⁸⁸**

\$50 OFF AM/FM play/record stereo Regular \$269.99 **219⁸⁸**

\$50 OFF 100% solid-state portable color TV Regular \$369.99 **319⁸⁸**

Color TV has 19-in. diagonal measure picture. 100% solid-state chassis helps assure dependable operation. Also one-button color, super chromix, in-line picture tube.

Component system has AM/FM stereo radio, a full-size record changer with ceramic cart-ridge and diamond-tipped stylus. Each 19-in. high speaker enclosure contains a 6-in. woofer and a 3-in. tweeter.

Portable color set has 13-in. diagonal measure picture and dependable 100% solid-state chassis. One-button color for fine color and in-line super chromix picture tube.

Our lowest priced microwave oven Check Sears price With cookbook **\$188**

Low priced, yet has 400 watts of cooking power! Handy 10-minute timer and signal bell let you know when food is ready. Weighs only 54 lbs. — fits on most kitchen counters.

19.0-cubic foot refrigerator-freezer Frostless **\$388**

No messy defrosting in either section. Big capacity 13.65 cu. ft. refrigerator, 5.35 cu. ft. freezer with separate cold controls. Roomy shelves, fruit-vegetable crisper.

15.9 cubic foot upright freezer Recessed handle **\$268**

Make the most of your food dollar by stocking up on grocery specials! Has grille-type shelves to help air circulate for fast-freezing. Bottom basket holds large packages.

WEIGHT WATCHERS IS RIGHT ON TARGET FOR YOU!

Time-tested and proven by thousands of Men, Women and Teen! Enjoyable, inexpensive. No contracts. New members welcomed at all times. There's a class near you! Join Now!

Clinton Colchester Danbury East Lyme Gales Ferry Groton Middletown Mystic New London Norwich Old Saybrook Pawcatuck Putnam Storrs Taftville Uncasville Vernon Willimantic Westbury, R.I.

\$7.00 first meeting, then \$3.00 weekly
For information about meetings in all areas call or write (203) 928-5188
Route 169, Pomfret Center, Connecticut 06259
CLIP AND SAVE!

The Country Square

RESTAURANT & LOBBY
81, 83 ELLINGTON BL. 672-7227

STEAKS - ITALIAN-AMERICAN SPECIALTIES

DINE & DANCE ON VALENTINE'S DAY

Sweetheart Special CHAMPAGNE TOAST FULL COURSE DINNER U.S. Choice Steak or Baked Stuffed Shrimp \$14.75 for TWO

OR CHOOSE FROM OUR FULL ALACARTE MENU
ITALIAN SELECTIONS on menu have been extended to include Lasagne, Manicotti, Ravioli and other Pastas.

CHILDREN'S MENU \$1.75

DANCING Entertainment Facilities
FRI & SAT. 10 to 2:00
The Veranda SALARY

SHOP AT SEARS AND SAVE Satisfaction Guaranteed or Your Money Back

Sears MANCHESTER WEST HARTFORD

STORE HOURS MON. thru SAT. 10 A.M. to 9 P.M.

SEARS, ROEBUCK AND CO.

Police report

Arrests made or summonses issued by Manchester Police included:

- John O. Cox, 34, and Currie L. Harris, 27, both of Hartford, each charged with third-degree larceny (shoplifting) at Mott's Shop-Rite Supermarket, Spencer St. Police said the charges involve alleged theft of about \$75 worth of meat Wednesday afternoon.
- Carmine S. DeLampio, 48, of 172 Greenwood Dr., charged Wednesday with evading responsibility, in connection with a Sunday traffic accident on Imperial Dr. Police said a car struck a utility pole and then left the scene. Court date is March 2.
- Raymond P. Lanoue, 24, of Windham Center, charged Wednesday night with fourth-degree

larceny (shoplifting) at King's Department Store, Manchester Shopping Parkade. Court date is March 8.

- John H. Montali, 21, of East Hartford, charged early today with fourth-degree larceny (shoplifting) at Mott's Shop-Rite Supermarket, Spencer St. Court date is March 1.
- Theresa T. Henderson, 52, of 117 Wells St., charged Wednesday with intoxication and risk of injury to a minor. Police said the charges were lodged after investigation of complaints about alleged child abuse involving an eight-month-old girl. Court date is March 1.
- Fred F. Gilha Jr., 22, of 50 Myrtle St., charged Wednesday with breach of peace and possession of marijuana. Police said the charges were lodged after a disturbance at a

local cafe. Court date is March 1.

Burglaries and thefts reported to Manchester Police included:

- An attempted break into Caldor of Manchester, Burr Corners Shopping Center. Police said doors were found open but still chained. It appeared nothing was taken.
- Theft of a \$200 woman's coat from an Avon St. residence.
- Several breaks into automobiles throughout town. In two incidents at a W. Middle Tpk. business, thieves made off with wallets containing about \$12 in cash.
- A break into the vacant Allied Building Systems complex, 260 Tolland Tpk., in which nothing was taken. Police said there was substantial vandalism, mostly broken windows.

A break into offices at the West Side Rec, 110 Cedar St., in which a money box containing \$15 was taken.

- A burglary at Creative Coiffures, 695 Main St., in which cigarettes, two wigs, cash and other items were stolen. Police said the loss amounted to about \$75.
- A break into the ski lift building at Manchester's Northview Ski Slope. A \$250 sound amplifier was taken.

Vandalism reported to police Wednesday included discovery of three damaged grave markers in Soldiers Field at the town's East Cemetery. One stone was knocked over and two sustained minor damage, apparently from being struck by a vehicle, police said.

Tax receipts reaches 98%

Tax receipts as of Jan. 31 to Manchester's General Fund equal just under 98 per cent of 12-month estimates, a report by Collector of Revenue James Turek indicates.

The current fiscal year ends June 30 and the ratio of receipts to estimates, with five months still to go, is the highest in recent years.

Tax revenue to Jan. 31 totaled \$15,563,433, against \$14,784,457 estimated. Actually, only \$169,000 still is outstanding for current taxes. Prior year's taxes outstanding total \$90,000 and interest and lien fees total \$22,500.

Tax receipts as of Jan. 31 to the Town Fire District Fund equal just under 99 per cent of 12-month estimates — \$1,336,238 collected and \$1,495,120 estimated by June 30. This ratio, too, is the highest in recent years.

Receipts against estimates to other funds as of Jan. 31 are: Special Downtown Taxing District, \$54,861 and \$60,375; Water Fund, \$451,842 and \$1,036,695; Sewer Fund, \$427,945 and \$875,630; and Data Processing Fund, \$107,973 and \$233,050.

Manchester Hospital Notes

Discharged Tuesday: Delores Vine, 171 Hebron Rd., Bolton; Phoebe Archer, Lubec, Maine; Joy Moss, East Hartford; Brian Stein, 15 Beechwood Rd., South Windsor; Mary Schultz, 40 Olcott St.; Maureen Gurske, 109 Olcott St.; Augustin Prete, West Hartford; Robert Bronelli, Virginia Lane, Tolland; Marilyn Linde, 63 Montclair Dr.

Also, Susan Dennison, Marlborough; Normand Blais, East Hartford; Dorothy Conolly, 33 School Rd., Bolton; Pamela Hunt, Broad Brook; Michael and Julie Lehr, 48 Avondale Rd.; Harry Mitchell, East Hartford.

Police car bids opened

Manchester Plymouth of Talcottville is the apparent low bidder for furnishing 10 cruisers for the Manchester police department. Its net price is \$35,800 for 1976 Police Cruiser Model Plymouths. It reached that figure by allowing \$11,200 for the trade-in of 10 used cruisers.

Other bidders are: Dillon Sales & Service, Chorbos Motors and Carrier Chevrolet, all of Manchester, and Jack O'Keefe Chevrolet of Hartford. The high net bid is \$43,500.

The town specified in the bid forms that delivery is to be after March 10. It expects to take delivery in May or June. All of the bids will be studied before a contract is awarded.

Being traded are seven 1974 Dodges and three 1975 Plymouths. Their aggregate mileage as of this week is about 700,000 miles.

Sears

LINCOLN'S BIRTHDAY SALE

SALE ENDS SATURDAY

Most Items at Reduced Prices

SAVE \$20
100% Solid-State
Black and White TV
Regular \$119.99

12-in. diagonal measure picture

Craftsman 71 Pc. Tool Set
40%-OFF
69⁹⁹

Regular Separate Price \$117.79

Craftsman 92-Pc. Tool Set, Reg. Separate Price \$178.04 **99⁹⁹**

Craftsman 81-Pc. Metric Tool Set, Regular \$119.99 **84⁹⁹**

Craftsman 147-Pc. Tool Set, Regular \$289.99 **219⁹⁹**

Craftsman 22-Pc. Metric Socket Set, Regular \$34.99 **22⁹⁹**

\$3 or \$4 OFF

8⁹⁹ Per Gallon

\$11.99 Sears Best Latex Flat Paint

\$12.99 Sears Best Latex Semi-gloss

\$12.99 Latex 1-Coat Ceiling Paint

VALUE
Zig-Zag Machine
Regular \$104.99

Dial straight or zig-zag stitches to sew or mend. With foot control and portable case.

Every Kenmore Washer and Dryer in Stock on SALE

SAVE \$20-\$50

Washers as Low as \$178 Dryers as Low as \$118

SAVE \$71
5-HP Direct-Drive Roto-Spader
249⁸⁸

Regular \$319.95

Vertical drive shaft puts weight over lines to help digging. Has 12-in. Slasher tines. Power reverse helps make turning easy. Partially assembled.

SAVE \$2.50
Deluxe Wood Toilet Set
5⁴⁹

Regular \$7.99

Durable wood with a smooth enamel finish. White or pastels.

SAVE \$7
Kenmore Disposer
32⁸⁸

Regular \$39.95

While quantities last, save on this 1/2-HP Kenmore food waste disposer. With quick-mount collar to aid do-it-yourself installation.

Disposer As Low As **24⁹⁵**

Pong to Play on Your TV
99⁹⁹

Pong is a lot like table tennis, but you play it on most any TV.

SAVE 29%
YOUR CHOICE **1⁷⁷** each

Regular \$2.49 ea.

Oil filters help protect engine. Meet new car warranty requirements. Help keep oil clean and free-flowing.

Blade refills for wipers. Fit Trico, Anco or Sears button-release or latch-type wiper arms.

1/3-OFF
Laundry Detergent
4⁶⁶

Regular \$6.99

Removes more soil than the nation's leading detergent and costs less than \$16 per lb. 1/2 cup does an average family washload! No phosphates.

MMH part-time nurses seek contract change

Part-time registered nurses at Manchester Memorial Hospital are negotiating for an addendum to the existing contract covering full-time nurses which will be presented at a hearing on Feb. 27.

The addendum will include the part-time nurses who voted in December to be represented in collective bargaining by the Connecticut Nurses Association, Unit 26. There are about 70 part-time nurses who work less than 20 hours a week, and 150 full-time nurses at the hospital, already members of the CNA, who work more than 20 hours.

The full-time nurses negotiated a

new two-year contract with the hospital last summer. The settlement, which was reached after a strike threat, resulted in an immediate 10 per cent wage increase as well as improvements in fringe benefits.

Under the new contract, the part-time nurses are receiving the same hourly wage as the full-time nurses. The items being negotiated now concern time and how it will be accrued for vacations, holidays and sick time.

A hospital spokesman said he foresees no problems in reaching an agreeable settlement.



BICENTENNIAL FACTS

Letters from home written by Abigail Adams to her husband while he served in the Continental Congress proved valuable in military and political intelligence. Sharp with details, Abigail sent news of enemy troop movements and kept John Adams abreast of events in and around British-held Boston. Adams proudly wrote to a friend of "A Lady at the Foot of Penn Hill, who obliges me... with clearer and fuller intelligence, than I can get from a whole Committee of Gentlemen," The World Almanac recalls.

Shell models on display

Models of the music shell to be built on land near Manchester Community College are on display at Mary Cheney Library, Whiton Memorial Library, and in the Main St. branch of the Connecticut Bank & Trust Co.

The models are available to any group or business wishing to display them.

There are also speakers available for any group wishing to have the music shell explained as to design and location.

Anyone interested may contact Ralph Maccanico, co-chairman of the music shell committee, at 649-

Dinner-dance set

The Parent/Student Club of Howell Cheney Regional Technical-Vocational School will sponsor a valentine dinner dance Feb. 27 at the Army and Navy Club on Main St.

A buffet supper will be served from 7:30 to 9 p.m. which will be followed by dancing with music furnished by The Rhythmairs.

For information and reservations, call A. Tomka, president, at 643-8931.

Barry wants funds used for sports

A bill to authorize the Board of Trustees of Regional Community Colleges to expend Auxiliary Services funds to develop new outdoor recreational facilities at Manchester Community College has been submitted by State Sen. David M. Barry to the General Assembly.

The act authorizes the board of trustees to expend up to \$250,000 to develop recreational, intramural and physical education playing fields as well as tennis courts on the MCC campus.

No state funds are requested for the development of this facility. The funds sought are those presently contained in the college's student activity fund and the Auxiliary Services fund of MCC, Barry said.

Laurel Manor to restrict all visitors

Effective immediately, all visits to Laurel Manor convalescent home, 91 Chestnut St., are prohibited except for immediate family members on an emergency basis only.

The visiting restrictions will remain in effect to avoid the spreading of flu-like illness until further notice.

Report cards

Report cards at East Catholic High School were given to the students Wednesday.

Sears

LINCOLN'S BIRTHDAY SALE

SALE ENDS SATURDAY

Most Items at Reduced Prices

\$4 OFF!
Pre-Washed Denim
Reg. \$14 Jeans **9⁹⁹**
Reg. \$18 Jacket **13⁹⁹**

All-cotton, soft, faded jeans and jackets, waist length jacket, flared jeans.

SAVE 20%
Roughhousers™ Western-look Jeans and Shirts
Regular \$4.99 to \$6.99
3⁹⁹ to 5⁵⁹

These are our Circle S jeans... in kids' sizes 3-6x, Boys' 8-12, Girls' 7-14, Student Boys' 14-20.

1/2-Price
Acrylic Cardigan
Regular \$5 to \$11
2⁴⁹ to 5⁴⁹

Assorted Sizes and Colors

Men's Leisure Suit
Sears Low Price
19⁹⁹

From our Kings Road collection. Our double knit leisure suit with matching slacks, chest pockets, snap front closure, flare leg slacks.

FASHION FOR THE HOME

1/2 Price sq. yd.
YOUR CHOICE of Shag or Sculptured Nylon Pile Carpet
Regular \$7.99 **3⁹⁹**

Artistry in shag in 5 attractive multi-color blends. Margee sculptured has deep random pattern in 10 bright colors, both solids and two-tones. Don't miss these great values!

\$7 to \$8 off
Women's Polyester and Cotton Shirts
Regular \$8 to \$9
99c

Misses' and Women's Sizes and Assorted Colors

SAVE \$2!
Men's Knit Shirts in Lively Prints
Regular \$10
7⁹⁹

These long sleeve shirts in a variety of print and fabric blends.

25% OFF
Royal Jewel Panels
40x24-in. Long
Regular \$2.09 **1⁵⁶**

Lock! Single-width panels come in 7 fashion colors.

Root-pocket panel of Dacron® polyester nylon is ideal under draperies or by itself. Perma-Frost® curtain needs no ironing when tumbled dry.

Size	Reg. Price	Size	Reg. Price	Size	Reg. Price	
48x30	2.29	1-12	20x31	5-19	60x83	4.29
48x36	2.49	1-12	20x37	5-19	60x89	4.79
48x42	2.69	1-12	20x43	5-19	60x95	5.29
48x48	2.89	1-12	20x49	5-19	60x101	5.79

1/2-Price
Sears Best Perma-Frost® Robes of Polyester Fleece
Limited Quantity
11⁹⁹

Regular \$24
Assorted Sizes and Colors

SAVE 33%
Rechargeable Calculator with % Key, Memory
Reg. \$29.99 **19⁹⁹**

Our 8-digit calculator has memory, floating decimal, percent and exchange keys. Bright green fluorescent display shows your answers. With vinyl pouch and AC adapter/re-charger.

SAVE \$6
Leather Service Shoe with Cushioned Insoles
Regular \$24.99
Oxford **18⁹⁹**

Leather uppers. Good-year welt construction, composition rubber sole and heel, resists gas, grease, and oil. Sizes 7-11, 11D, 7-11EE.

SAVE \$6
Cowhide Wellington Black Boots
Regular \$29.99
23⁹⁹

8 in. high. Cushion insoles, cloth lined, rubber soles. Sizes 7-11, 11D, 7-11EE.

28% OFF
Cling-alon Knee-high Socks
Regular \$1.39
99c

Ready to take some ribbing? You'll love the way it accents the top of our cable or flat knit knee high. Both styles made of Orlon® acrylic and stretch nylon. Both one-size. Choose from a rich color collection.



WESTOWN PHARMACY
433 HARTFORD RD., MANCHESTER 06105
253-1259

"YOUR COMMUNITY HEALTH SERVICE STORE, WITH OVER 25 YEARS OF CONTINUOUS SERVICE 7 DAYS A WEEK"

Hallmark Valentine's Day Cards
Saturday, Feb. 14
WESTOWN PHARMACY
433 HARTFORD RD., MANCHESTER 06105
253-1259

"YOUR COMMUNITY HEALTH SERVICE STORE, WITH OVER 25 YEARS OF CONTINUOUS SERVICE 7 DAYS A WEEK"



SHOP AT SEARS AND SAVE Satisfaction Guaranteed or Your Money Back



MANCHESTER WEST HARTFORD

STORE HOURS MON. thru SAT. 10 A.m. to 9 P. M.

SHOP AT SEARS AND SAVE Satisfaction Guaranteed or Your Money Back



MANCHESTER WEST HARTFORD

STORE HOURS MON. thru SAT. 10 A.M. to 9 P.M.

WESTOWN PHARMACY 433 HARTFORD RD., MANCHESTER 06105 253-1259 "YOUR COMMUNITY HEALTH SERVICE STORE, WITH OVER 25 YEARS OF CONTINUOUS SERVICE 7 DAYS A WEEK"

1
2
FEB
1
2

Manchester Evening Herald
Founded Oct. 1, 1881
Member, Audit Bureau of Circulations
Member, United Press International
Published by the Manchester Publishing Co., Herald Square,
Manchester, Conn. 06040. Telephone (203) 643-2711.

Opinion



Bicentennial Landmark

Bicentennial president

At four score and seven years at the time he spoke, the still-young nation was confronting the greatest challenge to its existence with the issue by no means certain.

It is in great part thanks to him that it now counts 20 score.

Abraham Lincoln thus has a particular relevance to this Bicentennial year. Possibly the Union would have survived without him.

Possibly history, however, is not compounded of possibilities. It is a record of actualities.

And the actuality of Lincoln is that faced with a nation divided against itself, he prevented it from destroying itself.

He was a president of

paradoxes. He sought to preserve the Union, but his rise to power divided it.

All of this, of course, contributes to his greatness in our eyes. For we recognize in him a tragic hero of our age.

We have expanded in power and matured in the organization of our society since his time. But we have not outgrown the need for a firm sense of national purpose and the determination upon the part of each succeeding generation not to lose by default what the dedication and sacrifice of previous generations have achieved.

In this lies the enduring message of Abraham Lincoln to Bicentennial America.

ALMANAC

By United Press International Today is Thursday, Feb. 12, the 43rd day of 1976 with 323 to follow. This is Lincoln's birthday.

The morning stars are Mercury and Mars.

The evening stars are Venus, Jupiter and Saturn.

Those born on this date are under the sign of Aquarius.

Abraham Lincoln, 16th president of the United States, and British biologist Charles Darwin were born Feb. 12, 1809.

THOUGHT

"You love him even though you have never seen him... and are happy with the inexpressible joy that comes from heaven itself." (1 Pe. 1:8 L.B.)

Peter is describing a state of heart and mind existing among the early Christians living in Asia Minor who had received the promise of Christ. "Blessed are they that have not seen yet believe..." In. 30:29

A President trying too hard

RAY CROMLEY

WASHINGTON — President Ford is not in good shape. When he took over the job at the White House, he was as ease, confident, unassuming.

Today, Mr. Ford is a different man. He looks tired and uncomfortable. He no longer slouches but stands precisely erect. His clothes are impeccably tailored. He's starting, in fact, to look like a stereotype of the dozen or so other presidential candidates, announced and unannounced.

His voice, which once gave the impression of friendly reasonableness under fire, now goes silent on his questions. When he faces rough queries, his voice grows louder and louder, until he is almost shouting.

High taxes drive out businesses

ANDREW TULLY

WASHINGTON — I keep telling myself that New York City's financial problems are of no concern to the rest of the country — and not believing a word I say.

One reason I question my own credibility is that things keep happening in New York that say the bell is tolling for other American cities. Maybe what happens to our bigger cities is no longer important. Maybe cities have become obsolete. I don't think we can afford to buy that proposition, in terms of dollars and cents.

Instead, we should start worrying about the tendency in too many cities to drive businesses elsewhere through high taxes and intolerably high production costs.

In New York the other day, the F. & M. Schaefer Corp., which brews beer, was called upon at a City Council committee hearing to defend its decision to move its operations from Brooklyn to Pennsylvania, thereby taking 500 jobs out of the city.

Alvin Heutschy, counsel and vice president of the Schaefer, said one reason for the move was higher real estate taxes — \$12,000 on its new 16-acre Brooklyn plant compared with only \$250,000 on its new \$60-million, 64-acre plant near Allentown, Pa. Saving nearly \$500,000 a year these days is not sneezed at by most businessmen.

Then there is the city's 4 per cent sales tax — the old man materials purchases, a tax not levied anywhere else in the country. There is the tax on Schaefer advertising signs at the stadium and Madison Square Garden, a tax on its rented car spaces in Manhattan, and the city's 3 per cent tax on fuel and 7 per cent tax on electricity. There are special charges for city services.

Editor's note: Candidates for the national nomination of their parties, and other political leaders were invited by Newspaper Enterprise Association to contribute articles concerning presidential character. What sort of person should be elected president on Nov. 2, 1976, and why? Following is the list of contributions.

By Sargent Shriver

In the early days of the federal civil service program, I met an elderly couple in Detroit who had just recovered \$98.70 with the help of one of your young lawyers. Their faces were filled with joy. "This is the first time in our lives we ever won anything," the old man explained to me. "This is the first anyone was ever on OUR side."

The important question in 1976, it seems to me, is whether the election will once again place our government on the side of the people.

Not on the side of big business or any other special interest, but the side of the people.

As we approach our nation's Bicentennial, it is clear that many Americans don't believe their government is on their side. Pollster Louis Harris reports that 67 per cent feel their views "don't really count much any more," and 63 per cent subscribe to the notion that "people running the country don't really care what happens to me."

Patrick Cadell of Cambridge Reports says his figures show that 58 per cent of the public believes that in the last 10 years "America's leaders have consistently lied to the American people." And, according to Peter D. Hart, 57 per cent believe their political leaders "are more in favor of big business" than in the average worker.

Robert Sargent Shriver was born Nov. 9, 1915, in Westminster, Md. He received a B.A. degree from Yale in 1938 and an LL.B. in 1941. Shriver served in the Navy Reserve, 1946-48. He was an assistant editor of Newsweek, 1948-49. From 1949 to 1960, Shriver worked on the staff of Joseph P. Kennedy, serving as assistant general manager of Kennedy's Merchandise Mart in Chicago from 1949 on. He was president of Chicago's Board of Education, 1954-59. Shriver joined the administration of his brother-in-law John F. Kennedy in 1961 as first director of the Peace Corps. He was director of the Office of Economic Opportunity — 1962-65. He was ambassador to France, 1965-70. Shriver served as a special assistant to President Nixon in 1971, but was placed on the Democratic ticket as vice presidential nominee the following year after the withdrawal of the designated candidate Thomas Eagleton. He is married and has five children.

Let us rejoice because the promises of God are unchanging and apply to every generation of those who love and trust Him. Evelyn F. Morrison The Salvation Army

Ford himself would have been satisfied with a few months back. Mr. Ford's briefing of newspapermen on the budget, in sum, was painful to watch. This was all the more strange because his budget is, as budgets go in this city, not bad at all. There are sections which seem abominable to this reporter — but no more than in most such documents. There is a good deal of the normal fuzziness. But there are a good many sections, surprising in this election year, which push programs and expenditure increases for items with profits five, eight and 10 years or more in the future in areas not normally calculated to bring political credit — market increases in basic research, for example. And management reorganizations certain to stir up storms from opponents and too esthetic to win praise from potential backers.

One gets the feeling, these things are impossible to prove, that Mr. Ford's nervousness is not in the problems of the presidency. It does not lie, for example, in the problem of dealing with an opposition majority in Congress. Or with the growing difficulty of handling the twists and turns of the Soviet Union, the Middle East crisis and Angola. Rather it's his fear of losing in his bid for nomination and election.

It seems clear the strain of the political campaign is starting to get to him before the slugging has hardly begun.

The Reagan candidacy, coming from that very wing of his own party which Mr. Ford had considered his own, has seemingly done something to his confidence difficult to describe.

Mr. Ford has not faced a rough election contest for a very long time, having become so popular with the voters in his Michigan Congressional district that he grew into the habit of re-electing him hands down term after term. And running for Congress is not like running for the White House. Especially when you're there already and there's no place to go politically but down.

sewer rates a whopping 40 per cent and boost charges for professional licenses. Businesses have been moving to the suburbs for the past 15 years because of increased costs of operation in the District. More will follow should the new tax increases go through.

In New York, union officials representing Schaefer employes charged the decision to move was made, not because operations in Brooklyn were unprofitable, but because the company anticipated making even bigger profits in its new location. The argument is juvenile. Corporations are in business to make money. Some of them might be too greedy, but that's of my moral relevance. People buy stock to earn dividends, not to finance virtue.

If Congress approves, the D.C. government will increase water and sewer rates a whopping 40 per cent and boost charges for professional licenses. Businesses have been moving to the suburbs for the past 15 years because of increased costs of operation in the District. More will follow should the new tax increases go through.

Election '76 The men who would be President Shriver: Whose side is government on?

Editor's note: Candidates for the national nomination of their parties, and other political leaders were invited by Newspaper Enterprise Association to contribute articles concerning presidential character. What sort of person should be elected president on Nov. 2, 1976, and why? Following is the list of contributions.

By Sargent Shriver

In the early days of the federal civil service program, I met an elderly couple in Detroit who had just recovered \$98.70 with the help of one of your young lawyers. Their faces were filled with joy. "This is the first time in our lives we ever won anything," the old man explained to me. "This is the first anyone was ever on OUR side."

The important question in 1976, it seems to me, is whether the election will once again place our government on the side of the people.

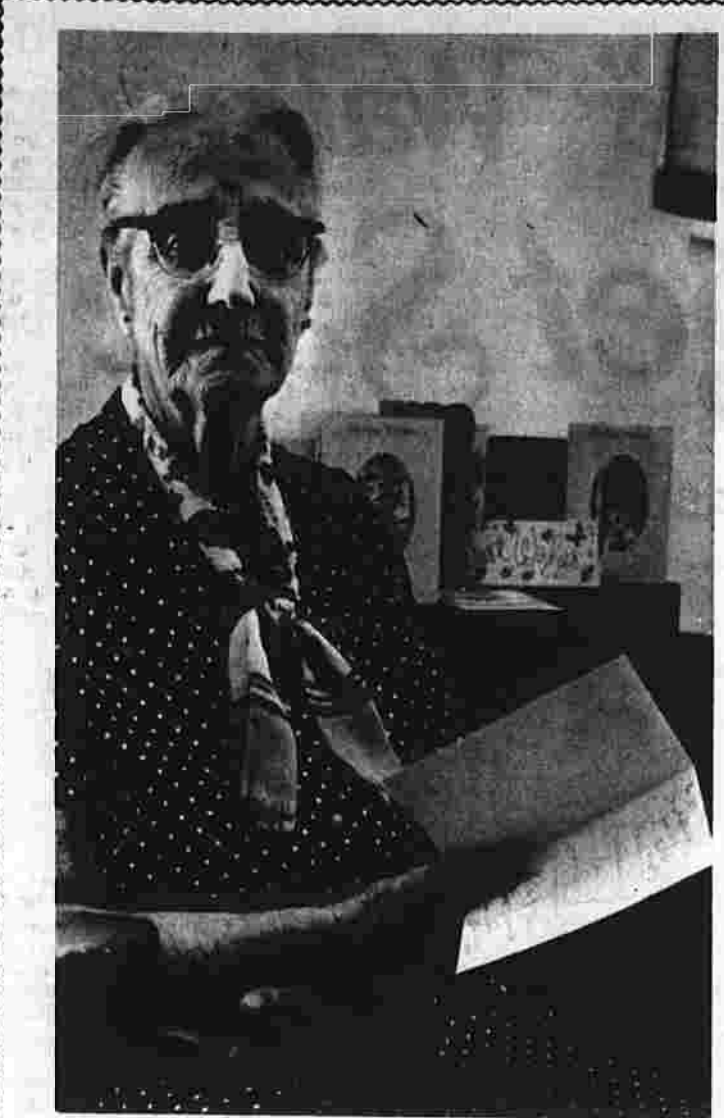
Not on the side of big business or any other special interest, but the side of the people.

As we approach our nation's Bicentennial, it is clear that many Americans don't believe their government is on their side. Pollster Louis Harris reports that 67 per cent feel their views "don't really count much any more," and 63 per cent subscribe to the notion that "people running the country don't really care what happens to me."

Patrick Cadell of Cambridge Reports says his figures show that 58 per cent of the public believes that in the last 10 years "America's leaders have consistently lied to the American people." And, according to Peter D. Hart, 57 per cent believe their political leaders "are more in favor of big business" than in the average worker.

Robert Sargent Shriver was born Nov. 9, 1915, in Westminster, Md. He received a B.A. degree from Yale in 1938 and an LL.B. in 1941. Shriver served in the Navy Reserve, 1946-48. He was an assistant editor of Newsweek, 1948-49. From 1949 to 1960, Shriver worked on the staff of Joseph P. Kennedy, serving as assistant general manager of Kennedy's Merchandise Mart in Chicago from 1949 on. He was president of Chicago's Board of Education, 1954-59. Shriver joined the administration of his brother-in-law John F. Kennedy in 1961 as first director of the Peace Corps. He was director of the Office of Economic Opportunity — 1962-65. He was ambassador to France, 1965-70. Shriver served as a special assistant to President Nixon in 1971, but was placed on the Democratic ticket as vice presidential nominee the following year after the withdrawal of the designated candidate Thomas Eagleton. He is married and has five children.

Let us rejoice because the promises of God are unchanging and apply to every generation of those who love and trust Him. Evelyn F. Morrison The Salvation Army



96 years young Mrs. Judith I. Netto of Holiday House at 29 Cottage St. observed her 96th birthday Feb. 9. Born in Italy, Mrs. Netto has lived in Manchester for 40 years. She has three daughters, Mrs. Lena Paquette of 41 Lyness St.; Mrs. Joseph Fontanella of 272 Porter St.; Mrs. Mary O'Coin of Stafford Springs; and two sons, William Netto of Lawrence, Mass., and Antonio Netto of Los Angeles, Calif. She has 14 grandchildren and 12 great-grandchildren.

Births

Altru, Jeffrey Michael, son of Salvatore and Elaine Butler Altru of 72 Shepard Dr. He was born Feb. 5 at Manchester Memorial Hospital. His maternal grandparents are Mr. and Mrs. Raymond Butler of North Windham. His paternal grandparents are Mr. and Mrs. Salvatore A. Altru of East Haven. He has two brothers, Scott 5, and Brian 3.

Miclette, Caroline Amy, son of Robert and Cheryl Anne Miclette of Breezeway Dr., Coventry. She was born Feb. 8 at Manchester Memorial Hospital. Her maternal grandparents are Mr. and Mrs. Joseph C. Dignoli of East Hartford. Her paternal grandparents are Mr. and Mrs. Paul Heon of Andover. Her paternal grandparents are Mr. and Mrs. Catherine Bak of Hillstown Rd. She has a sister, Jamie Lynn 4.

Stakey, Joshua Allen, son of James A. and Colleen Phaneuf Stakey of Southington. He was born Feb. 4 at Manchester Memorial Hospital. His maternal grandparents are Mr. and Mrs. Howard Phaneuf of 86 Benton St. His paternal grandparents are Mrs. Marilyn Stakey of Hartford and William Stakey of Fort Lauderdale, Fla. His maternal grandparents are Mr. and Mrs. Robert L. Tilden of Meriden. His paternal grandparents are Mr. and Mrs. Alfred Phaneuf of Southington. His grandfather is Adolph Malcoin of Southington.

Menus

MCC menus Menu which will be prepared and served by members of the Department of Hotel and Food Service Management and the Cook and Bakers Training Program at Manchester Community College next week, are as follows: Lunches: Monday: Dutch potato soup, Swiss steak jardiniere, Theresa potatoes, corn O'Brien, pineapple cottage cheese, French bread and butter, cream puffs, coffee or tea. Tuesday: Apple shrub, roast loin of pork with sauce, apple sauce, corn fritters, buttered chopped broccoli, mixed green salad with goddess dressing, assorted dinner rolls, glaze vanilla sauce.

blueberry turnovers, coffee or tea. Wednesday: Minestrone soup, spaghetti with meat sauce, mixed garden greens, French fried eggplant, homemade Italian bread, biscuit tortoni, coffee or tea. Thursday: Chicken vegetable soup, turkey chick sandwich, cole slaw, French fried potatoes, Boston cream pie, coffee or tea. Dinner: Tuesday: Apple shrub, roast loin of pork with sauce, apple sauce, corn fritters, buttered chopped broccoli, mixed green salad with goddess dressing, assorted dinner rolls, glaze vanilla sauce.

25% OFF ALL WINTER CLOTHING FRI. FEB. 13th TO MON., FEB. 16th JACKETS • GLOVES • HATS • SOCKS • UNDERWEAR FARR'S 2 MAIN ST. TOI. 643-7111 OPEN MON. TO SAT. TO 9:00 P.M.

SCSC students named to dean's list for fall semester

Area students named to the dean's list for the fall semester at Southern Connecticut State College are as follows: Manchester: Majia Damberg, 4 Harding St.; Judith Dziedziak, 28 Durkin St.; Susan Joyner, 27 Sautters Rd.; Cathryn Linsenbiger, 109 Columbus St.; Kathleen Maloney, 300 Windsor St.; Marianne Midlin, 20 Arcella Dr.; Jane Perkins, 23 Autumn St.; Janice Reault, 35 South Farms Dr.; Francine Rowe, 82 Irving St.; Deborah Shanley, 43 Philip Rd.; David Stevenson, 46 Kennedy Rd.; and Lois Wojcicki, 23 Bliss St. East Hartford: Marion Blase, 409 Hills St.; Tracey Bradbury, 671 Brewer St.; Ann Dumais, 1416 Forbes St.; Lisa Fiori, 240 Ellington Rd.; Gall Goldfarb, 35 Northfield Dr.; Sara Hadfield, 96 Westery Ln. Rd.; and Lisa Yonan, 21 Pine Knob Circle. High St.: Eileen McCarthy, 36 Rowland Dr.; Lois Miller, 72 Whitehall Dr.; Eileen Pomerleau, 541 Brewer St.; MaryLin Smoragiewicz, 102 Shannon Rd.; Daniel Stark, 69 Jerry Rd.; Dorothea Turmel, 69 Shadycrest Dr.; South Windsor: Catherine Favreau, 461 Graham Rd.; Raymond Favreau, 461 Graham Rd.; Patricia Foster, 90 Foster St.; Diana Gough, 42 Woodland Dr.; Christine Hogan, 165 Scantic Meadow Rd.; Jacqueline Jones, 75 Deming St.; Jeffrey Jones, 76 Deming St.; Jean Jukins, 477 Foster St.; Denise Pajot, 770 Clark St.; Laura Susko, 477 Griffin Rd.; and Lisa Yonan, 21 Pine Knob Circle. Vernon: Carol Filbig, 78 Hillside Manor Ave.; Shelley Lacey, 679 Hartford Tpk.; Lori Lewis, 45 Sunnyside Dr.; Carol Purovost, 111 Merline Rd. Rockville: Patricia Babcock, 68 South St.; Brian Doyle, 22 Highland Ave. Ann Pacheco, 51 Talcott Ave.; Karen Peterson, 99 Range Hill Dr.; Sandra Wrona, 44 Spring St. Hebron: Pamela Bergeron, 181 North St. Coventry: Margaret Pratt, Nathan Hale Dr. Columbia: Scott Shepard, Sleepy Hollow Rd.

Legion to elect officer

The Dilworth-Cornell-Quey Post of the American Legion will hold an election for the office of junior vice commander on March 9 to fill the vacancy created by the resignation of Norman O. LaRose. The election will be held at the Post's regular monthly meeting on March 9 at 9 p.m. at the Post Home, 20 American Legion Dr. The nominating committee will submit a candidate for consideration by the membership. Nominations will also be accepted from the floor. Article 5, Sec. 6, of the Constitution and bylaws of the Post, states that every member of the post in good standing shall be eligible to hold office in the post.

WANT ADS cover your needs

Washington's Birthday Sale! USDA CHOICE BOTTOM ROUND ROAST \$1.49 FROM ROUND CUBE STEAK \$1.69 USDA CHOICE TOP ROUND ROAST \$1.69 USDA CHOICE TOP ROUND STEAK \$1.69 Sweet Life BLEACH 49c 12 Count PAMPER TODDLER \$1.29 Smucker GRAPE JELLY 79c 12 oz. Plantar Creamy PEANUT BUTTER 99c 23 oz. Mrs. Smith's CHERRY PIES 89c 20 ct. Welch's GRAPE DONUTS 69c APPLE RASPBERRY GLAZED 39c TROPICANA ORANGE JUICE 39c 12 oz. GREEN GIANT NIBLET CORN, PEAS LEAF SPINACH 39c 10 oz. Heinz DEEP FRIES 99c 36 oz. CRINKLE CUT VIVA JUMBO TOWELS 99c 2 rolls GREEN GIANT KITCHEN SLICED GREEN BEANS 99c 4 16 oz. Mrs. Smith's CHERRY PIES 89c 20 ct. Welch's GRAPE DONUTS 69c APPLE RASPBERRY GLAZED 39c TROPICANA ORANGE JUICE 39c 12 oz. GREEN GIANT NIBLET CORN, PEAS LEAF SPINACH 39c 10 oz. Heinz DEEP FRIES 99c 36 oz. CRINKLE CUT VIVA JUMBO TOWELS 99c 2 rolls GREEN GIANT KITCHEN SLICED GREEN BEANS 99c 4 16 oz. Mrs. Smith's CHERRY PIES 89c 20 ct. Welch's GRAPE DONUTS 69c APPLE RASPBERRY GLAZED 39c TROPICANA ORANGE JUICE 39c 12 oz. GREEN GIANT NIBLET CORN, PEAS LEAF SPINACH 39c 10 oz. Heinz DEEP FRIES 99c 36 oz. CRINKLE CUT VIVA JUMBO TOWELS 99c 2 rolls GREEN GIANT KITCHEN SLICED GREEN BEANS 99c 4 16 oz. Mrs. Smith's CHERRY PIES 89c 20 ct. Welch's GRAPE DONUTS 69c APPLE RASPBERRY GLAZED 39c TROPICANA ORANGE JUICE 39c 12 oz. GREEN GIANT NIBLET CORN, PEAS LEAF SPINACH 39c 10 oz. Heinz DEEP FRIES 99c 36 oz. CRINKLE CUT VIVA JUMBO TOWELS 99c 2 rolls GREEN GIANT KITCHEN SLICED GREEN BEANS 99c 4 16 oz. Mrs. Smith's CHERRY PIES 89c 20 ct. Welch's GRAPE DONUTS 69c APPLE RASPBERRY GLAZED 39c TROPICANA ORANGE JUICE 39c 12 oz. GREEN GIANT NIBLET CORN, PEAS LEAF SPINACH 39c 10 oz. Heinz DEEP FRIES 99c 36 oz. CRINKLE CUT VIVA JUMBO TOWELS 99c 2 rolls GREEN GIANT KITCHEN SLICED GREEN BEANS 99c 4 16 oz. Mrs. Smith's CHERRY PIES 89c 20 ct. Welch's GRAPE DONUTS 69c APPLE RASPBERRY GLAZED 39c TROPICANA ORANGE JUICE 39c 12 oz. GREEN GIANT NIBLET CORN, PEAS LEAF SPINACH 39c 10 oz. Heinz DEEP FRIES 99c 36 oz. CRINKLE CUT VIVA JUMBO TOWELS 99c 2 rolls GREEN GIANT KITCHEN SLICED GREEN BEANS 99c 4 16 oz. Mrs. Smith's CHERRY PIES 89c 20 ct. Welch's GRAPE DONUTS 69c APPLE RASPBERRY GLAZED 39c TROPICANA ORANGE JUICE 39c 12 oz. GREEN GIANT NIBLET CORN, PEAS LEAF SPINACH 39c 10 oz. Heinz DEEP FRIES 99c 36 oz. CRINKLE CUT VIVA JUMBO TOWELS 99c 2 rolls GREEN GIANT KITCHEN SLICED GREEN BEANS 99c 4 16 oz. Mrs. Smith's CHERRY PIES 89c 20 ct. Welch's GRAPE DONUTS 69c APPLE RASPBERRY GLAZED 39c TROPICANA ORANGE JUICE 39c 12 oz. GREEN GIANT NIBLET CORN, PEAS LEAF SPINACH 39c 10 oz. Heinz DEEP FRIES 99c 36 oz. CRINKLE CUT VIVA JUMBO TOWELS 99c 2 rolls GREEN GIANT KITCHEN SLICED GREEN BEANS 99c 4 16 oz. Mrs. Smith's CHERRY PIES 89c 20 ct. Welch's GRAPE DONUTS 69c APPLE RASPBERRY GLAZED 39c TROPICANA ORANGE JUICE 39c 12 oz. GREEN GIANT NIBLET CORN, PEAS LEAF SPINACH 39c 10 oz. Heinz DEEP FRIES 99c 36 oz. CRINKLE CUT VIVA JUMBO TOWELS 99c 2 rolls GREEN GIANT KITCHEN SLICED GREEN BEANS 99c 4 16 oz. Mrs. Smith's CHERRY PIES 89c 20 ct. Welch's GRAPE DONUTS 69c APPLE RASPBERRY GLAZED 39c TROPICANA ORANGE JUICE 39c 12 oz. GREEN GIANT NIBLET CORN, PEAS LEAF SPINACH 39c 10 oz. Heinz DEEP FRIES 99c 36 oz. CRINKLE CUT VIVA JUMBO TOWELS 99c 2 rolls GREEN GIANT KITCHEN SLICED GREEN BEANS 99c 4 16 oz. Mrs. Smith's CHERRY PIES 89c 20 ct. Welch's GRAPE DONUTS 69c APPLE RASPBERRY GLAZED 39c TROPICANA ORANGE JUICE 39c 12 oz. GREEN GIANT NIBLET CORN, PEAS LEAF SPINACH 39c 10 oz. Heinz DEEP FRIES 99c 36 oz. CRINKLE CUT VIVA JUMBO TOWELS 99c 2 rolls GREEN GIANT KITCHEN SLICED GREEN BEANS 99c 4 16 oz. Mrs. Smith's CHERRY PIES 89c 20 ct. Welch's GRAPE DONUTS 69c APPLE RASPBERRY GLAZED 39c TROPICANA ORANGE JUICE 39c 12 oz. GREEN GIANT NIBLET CORN, PEAS LEAF SPINACH 39c 10 oz. Heinz DEEP FRIES 99c 36 oz. CRINKLE CUT VIVA JUMBO TOWELS 99c 2 rolls GREEN GIANT KITCHEN SLICED GREEN BEANS 99c 4 16 oz. Mrs. Smith's CHERRY PIES 89c 20 ct. Welch's GRAPE DONUTS 69c APPLE RASPBERRY GLAZED 39c TROPICANA ORANGE JUICE 39c 12 oz. GREEN GIANT NIBLET CORN, PEAS LEAF SPINACH 39c 10 oz. Heinz DEEP FRIES 99c 36 oz. CRINKLE CUT VIVA JUMBO TOWELS 99c 2 rolls GREEN GIANT KITCHEN SLICED GREEN BEANS 99c 4 16 oz. Mrs. Smith's CHERRY PIES 89c 20 ct. Welch's GRAPE DONUTS 69c APPLE RASPBERRY GLAZED 39c TROPICANA ORANGE JUICE 39c 12 oz. GREEN GIANT NIBLET CORN, PEAS LEAF SPINACH 39c 10 oz. Heinz DEEP FRIES 99c 36 oz. CRINKLE CUT VIVA JUMBO TOWELS 99c 2 rolls GREEN GIANT KITCHEN SLICED GREEN BEANS 99c 4 16 oz. Mrs. Smith's CHERRY PIES 89c 20 ct. Welch's GRAPE DONUTS 69c APPLE RASPBERRY GLAZED 39c TROPICANA ORANGE JUICE 39c 12 oz. GREEN GIANT NIBLET CORN, PEAS LEAF SPINACH 39c 10 oz. Heinz DEEP FRIES 99c 36 oz. CRINKLE CUT VIVA JUMBO TOWELS 99c 2 rolls GREEN GIANT KITCHEN SLICED GREEN BEANS 99c 4 16 oz. Mrs. Smith's CHERRY PIES 89c 20 ct. Welch's GRAPE DONUTS 69c APPLE RASPBERRY GLAZED 39c TROPICANA ORANGE JUICE 39c 12 oz. GREEN GIANT NIBLET CORN, PEAS LEAF SPINACH 39c 10 oz. Heinz DEEP FRIES 99c 36 oz. CRINKLE CUT VIVA JUMBO TOWELS 99c 2 rolls GREEN GIANT KITCHEN SLICED GREEN BEANS 99c 4 16 oz. Mrs. Smith's CHERRY PIES 89c 20 ct. Welch's GRAPE DONUTS 69c APPLE RASPBERRY GLAZED 39c TROPICANA ORANGE JUICE 39c 12 oz. GREEN GIANT NIBLET CORN, PEAS LEAF SPINACH 39c 10 oz. Heinz DEEP FRIES 99c 36 oz. CRINKLE CUT VIVA JUMBO TOWELS 99c 2 rolls GREEN GIANT KITCHEN SLICED GREEN BEANS 99c 4 16 oz. Mrs. Smith's CHERRY PIES 89c 20 ct. Welch's GRAPE DONUTS 69c APPLE RASPBERRY GLAZED 39c TROPICANA ORANGE JUICE 39c 12 oz. GREEN GIANT NIBLET CORN, PEAS LEAF SPINACH 39c 10 oz. Heinz DEEP FRIES 99c 36 oz. CRINKLE CUT VIVA JUMBO TOWELS 99c 2 rolls GREEN GIANT KITCHEN SLICED GREEN BEANS 99c 4 16 oz. Mrs. Smith's CHERRY PIES 89c 20 ct. Welch's GRAPE DONUTS 69c APPLE RASPBERRY GLAZED 39c TROPICANA ORANGE JUICE 39c 12 oz. GREEN GIANT NIBLET CORN, PEAS LEAF SPINACH 39c 10 oz. Heinz DEEP FRIES 99c 36 oz. CRINKLE CUT VIVA JUMBO TOWELS 99c 2 rolls GREEN GIANT KITCHEN SLICED GREEN BEANS 99c 4 16 oz. Mrs. Smith's CHERRY PIES 89c 20 ct. Welch's GRAPE DONUTS 69c APPLE RASPBERRY GLAZED 39c TROPICANA ORANGE JUICE 39c 12 oz. GREEN GIANT NIBLET CORN, PEAS LEAF SPINACH 39c 10 oz. Heinz DEEP FRIES 99c 36 oz. CRINKLE CUT VIVA JUMBO TOWELS 99c 2 rolls GREEN GIANT KITCHEN SLICED GREEN BEANS 99c 4 16 oz. Mrs. Smith's CHERRY PIES 89c 20 ct. Welch's GRAPE DONUTS 69c APPLE RASPBERRY GLAZED 39c TROPICANA ORANGE JUICE 39c 12 oz. GREEN GIANT NIBLET CORN, PEAS LEAF SPINACH 39c 10 oz. Heinz DEEP FRIES 99c 36 oz. CRINKLE CUT VIVA JUMBO TOWELS 99c 2 rolls GREEN GIANT KITCHEN SLICED GREEN BEANS 99c 4 16 oz. Mrs. Smith's CHERRY PIES 89c 20 ct. Welch's GRAPE DONUTS 69c APPLE RASPBERRY GLAZED 39c TROPICANA ORANGE JUICE 39c 12 oz. GREEN GIANT NIBLET CORN, PEAS LEAF SPINACH 39c 10 oz. Heinz DEEP FRIES 99c 36 oz. CRINKLE CUT VIVA JUMBO TOWELS 99c 2 rolls GREEN GIANT KITCHEN SLICED GREEN BEANS 99c 4 16 oz. Mrs. Smith's CHERRY PIES 89c 20 ct. Welch's GRAPE DONUTS 69c APPLE RASPBERRY GLAZED 39c TROPICANA ORANGE JUICE 39c 12 oz. GREEN GIANT NIBLET CORN, PEAS LEAF SPINACH 39c 10 oz. Heinz DEEP FRIES 99c 36 oz. CRINKLE CUT VIVA JUMBO TOWELS 99c 2 rolls GREEN GIANT KITCHEN SLICED GREEN BEANS 99c 4 16 oz. Mrs. Smith's CHERRY PIES 89c 20 ct. Welch's GRAPE DONUTS 69c APPLE RASPBERRY GLAZED 39c TROPICANA ORANGE JUICE 39c 12 oz. GREEN GIANT NIBLET CORN, PEAS LEAF SPINACH 39c 10 oz. Heinz DEEP FRIES 99c 36 oz. CRINKLE CUT VIVA JUMBO TOWELS 99c 2 rolls GREEN GIANT KITCHEN SLICED GREEN BEANS 99c 4 16 oz. Mrs. Smith's CHERRY PIES 89c 20 ct. Welch's GRAPE DONUTS 69c APPLE RASPBERRY GLAZED 39c TROPICANA ORANGE JUICE 39c 12 oz. GREEN GIANT NIBLET CORN, PEAS LEAF SPINACH 39c 10 oz. Heinz DEEP FRIES 99c 36 oz. CRINKLE CUT VIVA JUMBO TOWELS 99c 2 rolls GREEN GIANT KITCHEN SLICED GREEN BEANS 99c 4 16 oz. Mrs. Smith's CHERRY PIES 89c 20 ct. Welch's GRAPE DONUTS 69c APPLE RASPBERRY GLAZED 39c TROPICANA ORANGE JUICE 39c 12 oz. GREEN GIANT NIBLET CORN, PEAS LEAF SPINACH 39c 10 oz. Heinz DEEP FRIES 99c 36 oz. CRINKLE CUT VIVA JUMBO TOWELS 99c 2 rolls GREEN GIANT KITCHEN SLICED GREEN BEANS 99c 4 16 oz. Mrs. Smith's CHERRY PIES 89c 20 ct. Welch's GRAPE DONUTS 69c APPLE RASPBERRY GLAZED 39c TROPICANA ORANGE JUICE 39c 12 oz. GREEN GIANT NIBLET CORN, PEAS LEAF SPINACH 39c 10 oz. Heinz DEEP FRIES 99c 36 oz. CRINKLE CUT VIVA JUMBO TOWELS 99c 2 rolls GREEN GIANT KITCHEN SLICED GREEN BEANS 99c 4 16 oz. Mrs. Smith's CHERRY PIES 89c 20 ct. Welch's GRAPE DONUTS 69c APPLE RASPBERRY GLAZED 39c TROPICANA ORANGE JUICE 39c 12 oz. GREEN GIANT NIBLET CORN, PEAS LEAF SPINACH 39c 10 oz. Heinz DEEP FRIES 99c 36 oz. CRINKLE CUT VIVA JUMBO TOWELS 99c 2 rolls GREEN GIANT KITCHEN SLICED GREEN BEANS 99c 4 16 oz. Mrs. Smith's CHERRY PIES 89c 20 ct. Welch's GRAPE DONUTS 69c APPLE RASPBERRY GLAZED 39c TROPICANA ORANGE JUICE 39c 12 oz. GREEN GIANT NIBLET CORN, PEAS LEAF SPINACH 39c 10 oz. Heinz DEEP FRIES 99c 36 oz. CRINKLE CUT VIVA JUMBO TOWELS 99c 2 rolls GREEN GIANT KITCHEN SLICED GREEN BEANS 99c 4 16 oz. Mrs. Smith's CHERRY PIES 89c 20 ct. Welch's GRAPE DONUTS 69c APPLE RASPBERRY GLAZED 39c TROPICANA ORANGE JUICE 39c 12 oz. GREEN GIANT NIBLET CORN, PEAS LEAF SPINACH 39c 10 oz. Heinz DEEP FRIES 99c 36 oz. CRINKLE CUT VIVA JUMBO TOWELS 99c 2 rolls GREEN GIANT KITCHEN SLICED GREEN BEANS 99c 4 16 oz. Mrs. Smith's CHERRY PIES 89c 20 ct. Welch's GRAPE DONUTS 69c APPLE RASPBERRY GLAZED 39c TROPICANA ORANGE JUICE 39c 12 oz. GREEN GIANT NIBLET CORN, PEAS LEAF SPINACH 39c 10 oz. Heinz DEEP FRIES 99c 36 oz. CRINKLE CUT VIVA JUMBO TOWELS 99c 2 rolls GREEN GIANT KITCHEN SLICED GREEN BEANS 99c 4 16 oz. Mrs. Smith's CHERRY PIES 89c 20 ct. Welch's GRAPE DONUTS 69c APPLE RASPBERRY GLAZED 39c TROPICANA ORANGE JUICE 39c 12 oz. GREEN GIANT NIBLET CORN, PEAS LEAF SPINACH 39c 10 oz. Heinz DEEP FRIES 99c 36 oz. CRINKLE CUT VIVA JUMBO TOWELS 99c 2 rolls GREEN GIANT KITCHEN SLICED GREEN BEANS 99c 4 16 oz. Mrs. Smith's CHERRY PIES 89c 20 ct. Welch's GRAPE DONUTS 69c APPLE RASPBERRY GLAZED 39c TROPICANA ORANGE JUICE 39c 12 oz. GREEN GIANT NIBLET CORN, PEAS LEAF SPINACH 39c 10 oz. Heinz DEEP FRIES 99c 36 oz. CRINKLE CUT VIVA JUMBO TOWELS 99c 2 rolls GREEN GIANT KITCHEN SLICED GREEN BEANS 99c 4 16 oz. Mrs. Smith's CHERRY PIES 89c 20 ct. Welch's GRAPE DONUTS 69c APPLE RASPBERRY GLAZED 39c TROPICANA ORANGE JUICE 39c 12 oz. GREEN GIANT NIBLET CORN, PEAS LEAF SPINACH 39c 10 oz. Heinz DEEP FRIES 99c 36 oz. CRINKLE CUT VIVA JUMBO TOWELS 99c 2 rolls GREEN GIANT KITCHEN SLICED GREEN BEANS 99c 4 16 oz. Mrs. Smith's CHERRY PIES 89c 20 ct. Welch's GRAPE DONUTS 69c APPLE RASPBERRY GLAZED 39c TROPICANA ORANGE JUICE 39c 12 oz. GREEN GIANT NIBLET CORN, PEAS LEAF SPINACH 39c 10 oz. Heinz DEEP FRIES 99c 36 oz. CRINKLE CUT VIVA JUMBO TOWELS 99c 2 rolls GREEN GIANT KITCHEN SLICED GREEN BEANS 99c 4 16 oz. Mrs. Smith's CHERRY PIES 89c 20 ct. Welch's GRAPE DONUTS 69c APPLE RASPBERRY GLAZED 39c TROPICANA ORANGE JUICE 39c 12 oz. GREEN GIANT NIBLET CORN, PEAS LEAF SPINACH 39c 10 oz. Heinz DEEP FRIES 99c 36 oz. CRINKLE CUT VIVA JUMBO TOWELS 99c 2 rolls GREEN GIANT KITCHEN SLICED GREEN BEANS 99c 4 16 oz. Mrs. Smith's CHERRY PIES 89c 20 ct. Welch's GRAPE DONUTS 69c APPLE RASPBERRY GLAZED 39c TROPICANA ORANGE JUICE 39c 12 oz. GREEN GIANT NIBLET CORN, PEAS LEAF SPINACH 39c 10 oz. Heinz DEEP FRIES 99c 36 oz. CRINKLE CUT VIVA JUMBO TOWELS 99c 2 rolls GREEN GIANT KITCHEN SLICED GREEN BEANS 99c 4 16 oz. Mrs. Smith's CHERRY PIES 89c 20 ct. Welch's GRAPE DONUTS 69c APPLE RAS

Obituaries

Earle F. Laurence

Earle F. Laurence, 62, operator-manager of the Connecticut Motel, 400 Tolland Tpk., died Wednesday at Hartford Hospital after a long illness. He was the husband of Mrs. Marie L. McMenamin Laurence.

Mrs. Laurence was born in Worcester, Mass., and lived there until coming to Connecticut in the late 1950s. He had operated the Tolland Tpk. motel for several years.

Other survivors are two daughters, Mrs. Andrew F. Gagner of Ellington and Mrs. George Weable of Auburn, Mass.; two brothers, Roger C. Laurence of Cottage City, Md., and Warren A. Laurence of Alexandria, Va.; a sister, Mrs. Philip Greenleaf of Worcester; and eight grandchildren.

The funeral is Saturday at 11 a.m. at the Haden Park Congregational Church, Clover St., Worcester. Burial will be in Worcester County Memorial Park, Paxton, Mass.

Friends may call at the Wallace Funeral Home, 91 Central St., Auburn, Mass., Friday from 2 to 4 and 7 to 9 p.m.

The family suggests that any memorial gifts may be made to Heublein Radiation-Oncology Center, Hartford Hospital, 80 Seymour St., Hartford.

Anthony Poreda

ROCKVILLE — Anthony Poreda, 85, formerly of 70 Village St., died Wednesday in an area hospital.

Mr. Poreda was born in Poland and lived most of his life in Rockville. Before his retirement, he was employed in local woolen mills.

Survivors are two sons, Edward H. Poreda of Rockville and Theodore Poreda of Enfield; two grandchildren and a great-grandchild.

The funeral is private Friday at Burke-Furth Funeral Home, 225 Prospect St. Burial will be in St. Bernard's Cemetery.

There are no calling hours.

Mrs. J. Marion Powell

Mrs. J. Marion Powell, 51, of 791 Center St. died this morning at a Manchester convalescent home. She was the widow of Edwin H. Powell.

Mrs. Powell was born Feb. 11, 1883 in Hawkesbury, Ont., Can., and lived in the Manchester area for many years. She was a member of St. John's Episcopal Church, East Hartford, and a life member of the Ladies Guild. She also was a life member of Bigelow Chapter, OES, of East Hartford.

Survivors are two sons, J. Murray Powell of Manchester and Russell Powell of East Hartford; a sister, Mrs. Norma Miller of Canaan; two grandchildren and three great-grandchildren.

The funeral and burial are private at the convenience of the family.

The Fitzgerald Funeral Home, 225 Main St., is in charge of arrangements.

There are no calling hours.

Mrs. Harold Dellert

SOUTH WINDSOR — Mrs. Irene Vigneau Dellert, 65, of 1562 Main St. died Tuesday at Manchester Memorial Hospital. She was the wife of Harold A. Dellert.

Mrs. Dellert was born in New Britain and had lived in South Windsor for 12 years.

She is also survived by two stepdaughters, Mrs. Lorraine Larrabee of Manchester and Mrs. Louise Lyke of Warehouse Point; four grandchildren and two great-grandchildren.

The funeral is Friday at 1 p.m. at Samsel-Bassinger Funeral Home, 419 Buckland Rd. Burial will be in Center Cemetery.

Friends may call at the funeral home tonight from 7 to 9.

The family suggests that any memorial gifts may be made to the Heart Association of Greater Hartford, 310 Collins St., Hartford.

Mrs. Angeline DeSimone

Mrs. Angeline DeSimone, 85, of 28 Hamlin St. died Wednesday at Manchester Memorial Hospital. She was the widow of Luigi DeSimone.

Mrs. DeSimone was born March 25, 1890 in Fogia, Italy, and came to this country and settled in Manchester in 1916. Before her retirement in 1954, she was employed as a seamstress at Manchester Modes for over 20 years. She was a communicant of St. James Church and a member of the Ladies of St. James and the Regina D'Italia Society.

Survivors are two sons, Francis R. DeSimone of Manchester and Joseph M. DeSimone of Fort Lauderdale, Fla.; 4 daughters, Miss Emma R. DeSimone, with whom she made her home, Mrs. Anna Burke and Mrs. Elizabeth M. Pavolcak, all of Manchester, and Mrs. Gloria D. Gardner of Enfield; 13 grandchildren and 4 great-grandchildren.

The funeral is Saturday at 8:15 a.m. from Holmes Funeral Home, 400 Main St., with a Mass at St. James Church at 9 Burial will be in St. James Cemetery.

Friends may call at the funeral home Friday from 2 to 4 and 7 to 9 p.m.

The family suggests that any memorial gifts may be made to a charity of the donor's choice.

Area police report

Vernon
Vernon Police appeared to apprehend two juveniles Wednesday. They were charged with third-degree larceny, fourth-degree larceny, and third-degree criminal mischief.

The arrests were made in connection with the investigation of a break into the Maple St. School in Rockville during which food was taken and some vandalism occurred.

The youths, both 15-years-old, were turned over to juvenile authorities.

Fire calls

MANCHESTER
Wednesday, 3:15 p.m. — car fire on Centre and Adams Sts. (Town Fire Department)

Area police report

Vernon
Vernon Police appeared to apprehend two juveniles Wednesday. They were charged with third-degree larceny, fourth-degree larceny, and third-degree criminal mischief.

The arrests were made in connection with the investigation of a break into the Maple St. School in Rockville during which food was taken and some vandalism occurred.

The youths, both 15-years-old, were turned over to juvenile authorities.

Area police report

Vernon
Vernon Police appeared to apprehend two juveniles Wednesday. They were charged with third-degree larceny, fourth-degree larceny, and third-degree criminal mischief.

The arrests were made in connection with the investigation of a break into the Maple St. School in Rockville during which food was taken and some vandalism occurred.

The youths, both 15-years-old, were turned over to juvenile authorities.

Area police report

Vernon
Vernon Police appeared to apprehend two juveniles Wednesday. They were charged with third-degree larceny, fourth-degree larceny, and third-degree criminal mischief.

The arrests were made in connection with the investigation of a break into the Maple St. School in Rockville during which food was taken and some vandalism occurred.

The youths, both 15-years-old, were turned over to juvenile authorities.

Area police report

Vernon
Vernon Police appeared to apprehend two juveniles Wednesday. They were charged with third-degree larceny, fourth-degree larceny, and third-degree criminal mischief.

The arrests were made in connection with the investigation of a break into the Maple St. School in Rockville during which food was taken and some vandalism occurred.

The youths, both 15-years-old, were turned over to juvenile authorities.

Area police report

Vernon
Vernon Police appeared to apprehend two juveniles Wednesday. They were charged with third-degree larceny, fourth-degree larceny, and third-degree criminal mischief.

The arrests were made in connection with the investigation of a break into the Maple St. School in Rockville during which food was taken and some vandalism occurred.

The youths, both 15-years-old, were turned over to juvenile authorities.

Area police report

Vernon
Vernon Police appeared to apprehend two juveniles Wednesday. They were charged with third-degree larceny, fourth-degree larceny, and third-degree criminal mischief.

The arrests were made in connection with the investigation of a break into the Maple St. School in Rockville during which food was taken and some vandalism occurred.

The youths, both 15-years-old, were turned over to juvenile authorities.

Area police report

Vernon
Vernon Police appeared to apprehend two juveniles Wednesday. They were charged with third-degree larceny, fourth-degree larceny, and third-degree criminal mischief.

The arrests were made in connection with the investigation of a break into the Maple St. School in Rockville during which food was taken and some vandalism occurred.

The youths, both 15-years-old, were turned over to juvenile authorities.

Area police report

Vernon
Vernon Police appeared to apprehend two juveniles Wednesday. They were charged with third-degree larceny, fourth-degree larceny, and third-degree criminal mischief.

The arrests were made in connection with the investigation of a break into the Maple St. School in Rockville during which food was taken and some vandalism occurred.

The youths, both 15-years-old, were turned over to juvenile authorities.

Lee J. Cobb dies

LOS ANGELES (UPI) — Gavel voiced actor Lee J. Cobb, who created the role of Willy Loman in "Death of a Salesman" on Broadway and played the brawling union leader in the movie "On the Waterfront," died of a heart attack Wednesday at age 64.

Cobb gained stature on Broadway, then moved into movies and was regarded as a top actor in both. But he became known to millions because of his role as Judge Garth in the television series, "The Virginian."

He brought power and authority to all roles. He was outstanding as the tough union boss against Marlon Brando's longshoreman in "On the Waterfront," which won Brando an Academy Award.

The troopers' hats have become the "image of law enforcement in Connecticut," Stecko said, and help troopers maintain high visibility. Municipal policemen who wear "Smoky the Bear" hats, which somewhat resemble a trooper's sombrero but aren't exactly the same thing.

"We hope they (the 13-odd police departments using the new hats) don't buy new ones when they wear out," Stecko added.

But two municipal policemen favoring the hat at Wednesday's hearing said they like the new hats and don't want to give them up.

Officer Gary Pifer of the Vernon Police Department, representing Police Chief Herman Fritz and Vernon's local police union, brought his hat to the hearing.

The hat worn by Vernon policemen, Pifer explained, is black instead of grey, larger than the state hat, and has different creases in the peak.

"We don't intend to stop wearing them," Pifer said, "because they offer more protection than the regular police hat."

The other municipal policeman, East Hampton Officer Richard Ruel, agreed with Pifer. His department uses similar hats.

"We fought for a long time to get these hats," Ruel said, "and now we're fighting the State Police."

Burke's bill would remove from state statute a provision which prohibits anyone from wearing an "imitation, reproduction or facsimile" of the State Police hat.

Town had three Olympians

Just for the record department: Manchester has sent three men to past Olympic Games as participants. Joe McCluskey made the trip twice as a steeplechase runner, in 1932 in Los Angeles and 1936 in Berlin, Germany.

Pete Close took part in the 1,500 meters in Rome in 1960 and weightman Bill Burton tossed the discus in the 1948 games in London, England.

McCluskey and Close were products of Manchester High and Fordham University and St. John's University respectively.

Burton, a native of Abington, Mass., graduated from St. Anselm's and resided in Manchester following World War II into Army duty for several years.

Speaking about the Olympics, workers preparing the site for the summer games in Montreal are averaging between \$600 and \$700 weekly. The workforce numbers over 3,500.

Montreal officials originally estimated they could build the necessary facilities and stage the games for \$10 million.

The latest figure on the cost for the summer games, which start July 17, runs to better than \$485 million.

One can't get too excited over the Aetna World Cup's revised opening night program, which will feature a mixed doubles match March 4 before the singles match between Australia and United States players.

Wendy Overton and Ingrid Benizer are not box office magnets and not in the class of Billie Jean King or Chris Evert either.

The women tennis pro will team with Dennis Ralston and Fred Stolle as a preliminary to the opening singles match between representatives of the United States and Australia selected teams.

Mixed doubles matches hardly excite the average tennis fan. For a novelty, and an exhibition, which it will be, it may hold the fan interest.

Last year's celebrity night left much to be desired but celebrity play at Trinity's Ferris Center before the Civic Center opened offered some interesting and entertaining opening matches with the likes of Bill Cobby, Alan King, George Peppard and James Franciscus playing.

Aetna people are looking for four sellout dates. The Saturday afternoon and Sunday afternoon matches are all sold out and only a limited number of tickets remain for the two nights, Thursday and Friday, March 4-5.

Whalers in afternoon game

Fans holding tickets for Sunday's New England Whalers' hockey game are reminded that the starting time has been changed from 7:30 to 4 o'clock. Red-hot Cleveland will supply the opposition... Lou Holtz, new head coach of the New York Jets and former assistant at UConn, is one of the best story-tellers on the chicken and spaghetti circuit. Holtz appeared in Manchester several times while at UConn and had diners literally in stitches with his humor. The funny guy at UConn has too many laughs trying to right the sinking Jets' ship...

Whalers in afternoon game

Fans holding tickets for Sunday's New England Whalers' hockey game are reminded that the starting time has been changed from 7:30 to 4 o'clock. Red-hot Cleveland will supply the opposition... Lou Holtz, new head coach of the New York Jets and former assistant at UConn, is one of the best story-tellers on the chicken and spaghetti circuit. Holtz appeared in Manchester several times while at UConn and had diners literally in stitches with his humor. The funny guy at UConn has too many laughs trying to right the sinking Jets' ship...

Whalers in afternoon game

Fans holding tickets for Sunday's New England Whalers' hockey game are reminded that the starting time has been changed from 7:30 to 4 o'clock. Red-hot Cleveland will supply the opposition... Lou Holtz, new head coach of the New York Jets and former assistant at UConn, is one of the best story-tellers on the chicken and spaghetti circuit. Holtz appeared in Manchester several times while at UConn and had diners literally in stitches with his humor. The funny guy at UConn has too many laughs trying to right the sinking Jets' ship...

Whalers in afternoon game

Fans holding tickets for Sunday's New England Whalers' hockey game are reminded that the starting time has been changed from 7:30 to 4 o'clock. Red-hot Cleveland will supply the opposition... Lou Holtz, new head coach of the New York Jets and former assistant at UConn, is one of the best story-tellers on the chicken and spaghetti circuit. Holtz appeared in Manchester several times while at UConn and had diners literally in stitches with his humor. The funny guy at UConn has too many laughs trying to right the sinking Jets' ship...

Whalers in afternoon game

Fans holding tickets for Sunday's New England Whalers' hockey game are reminded that the starting time has been changed from 7:30 to 4 o'clock. Red-hot Cleveland will supply the opposition... Lou Holtz, new head coach of the New York Jets and former assistant at UConn, is one of the best story-tellers on the chicken and spaghetti circuit. Holtz appeared in Manchester several times while at UConn and had diners literally in stitches with his humor. The funny guy at UConn has too many laughs trying to right the sinking Jets' ship...

Whalers in afternoon game

Fans holding tickets for Sunday's New England Whalers' hockey game are reminded that the starting time has been changed from 7:30 to 4 o'clock. Red-hot Cleveland will supply the opposition... Lou Holtz, new head coach of the New York Jets and former assistant at UConn, is one of the best story-tellers on the chicken and spaghetti circuit. Holtz appeared in Manchester several times while at UConn and had diners literally in stitches with his humor. The funny guy at UConn has too many laughs trying to right the sinking Jets' ship...

Whalers in afternoon game

Fans holding tickets for Sunday's New England Whalers' hockey game are reminded that the starting time has been changed from 7:30 to 4 o'clock. Red-hot Cleveland will supply the opposition... Lou Holtz, new head coach of the New York Jets and former assistant at UConn, is one of the best story-tellers on the chicken and spaghetti circuit. Holtz appeared in Manchester several times while at UConn and had diners literally in stitches with his humor. The funny guy at UConn has too many laughs trying to right the sinking Jets' ship...

Whalers in afternoon game

Fans holding tickets for Sunday's New England Whalers' hockey game are reminded that the starting time has been changed from 7:30 to 4 o'clock. Red-hot Cleveland will supply the opposition... Lou Holtz, new head coach of the New York Jets and former assistant at UConn, is one of the best story-tellers on the chicken and spaghetti circuit. Holtz appeared in Manchester several times while at UConn and had diners literally in stitches with his humor. The funny guy at UConn has too many laughs trying to right the sinking Jets' ship...

Whalers in afternoon game

Fans holding tickets for Sunday's New England Whalers' hockey game are reminded that the starting time has been changed from 7:30 to 4 o'clock. Red-hot Cleveland will supply the opposition... Lou Holtz, new head coach of the New York Jets and former assistant at UConn, is one of the best story-tellers on the chicken and spaghetti circuit. Holtz appeared in Manchester several times while at UConn and had diners literally in stitches with his humor. The funny guy at UConn has too many laughs trying to right the sinking Jets' ship...

Whalers in afternoon game

Fans holding tickets for Sunday's New England Whalers' hockey game are reminded that the starting time has been changed from 7:30 to 4 o'clock. Red-hot Cleveland will supply the opposition... Lou Holtz, new head coach of the New York Jets and former assistant at UConn, is one of the best story-tellers on the chicken and spaghetti circuit. Holtz appeared in Manchester several times while at UConn and had diners literally in stitches with his humor. The funny guy at UConn has too many laughs trying to right the sinking Jets' ship...

Whalers in afternoon game

Fans holding tickets for Sunday's New England Whalers' hockey game are reminded that the starting time has been changed from 7:30 to 4 o'clock. Red-hot Cleveland will supply the opposition... Lou Holtz, new head coach of the New York Jets and former assistant at UConn, is one of the best story-tellers on the chicken and spaghetti circuit. Holtz appeared in Manchester several times while at UConn and had diners literally in stitches with his humor. The funny guy at UConn has too many laughs trying to right the sinking Jets' ship...

Whalers in afternoon game

Fans holding tickets for Sunday's New England Whalers' hockey game are reminded that the starting time has been changed from 7:30 to 4 o'clock. Red-hot Cleveland will supply the opposition... Lou Holtz, new head coach of the New York Jets and former assistant at UConn, is one of the best story-tellers on the chicken and spaghetti circuit. Holtz appeared in Manchester several times while at UConn and had diners literally in stitches with his humor. The funny guy at UConn has too many laughs trying to right the sinking Jets' ship...

Whalers in afternoon game

Fans holding tickets for Sunday's New England Whalers' hockey game are reminded that the starting time has been changed from 7:30 to 4 o'clock. Red-hot Cleveland will supply the opposition... Lou Holtz, new head coach of the New York Jets and former assistant at UConn, is one of the best story-tellers on the chicken and spaghetti circuit. Holtz appeared in Manchester several times while at UConn and had diners literally in stitches with his humor. The funny guy at UConn has too many laughs trying to right the sinking Jets' ship...

Burke's bill revives chapeau controversy

By DOUG BEVINS
Herald Reporter
State Police officials don't want municipal policemen to be mistaken for state troopers, the General Assembly's Government Administration and Policy Committee was told Wednesday.

The committee was conducting a State Capitol hearing on a proposed bill which would allow municipal policemen to wear hats resembling those worn by state troopers. The bill was proposed by Rep. Martin Burke (D-56th District) of Vernon, whose local police force has been using hats which resemble State Police hats.

Lt. Col. Walter Stecko, second in command in the State Police, said the exclusive right of troopers to wear their "grey sombreros" should be protected.

The other municipal policeman, East Hampton Officer Richard Ruel, agreed with Pifer. His department uses similar hats.

"We fought for a long time to get these hats," Ruel said, "and now we're fighting the State Police."

Burke's bill would remove from state statute a provision which prohibits anyone from wearing an "imitation, reproduction or facsimile" of the State Police hat.

Health Fair April 13

To update the public on disease prevention and health services available, the Manchester Public Health Nurses Association is planning a health fair for April 13 at Waddell School.

A screening program will be set up to test for diabetes, blood pressure and the anemias.

There will also be booths with educational material on lung diseases, planned parenthood, mental health, and other phases of health.

The fair will be from 2 to 8 p.m. Members of various health agencies and the medical profession will participate.

Health Fair April 13

To update the public on disease prevention and health services available, the Manchester Public Health Nurses Association is planning a health fair for April 13 at Waddell School.

A screening program will be set up to test for diabetes, blood pressure and the anemias.

There will also be booths with educational material on lung diseases, planned parenthood, mental health, and other phases of health.

The fair will be from 2 to 8 p.m. Members of various health agencies and the medical profession will participate.

Health Fair April 13

To update the public on disease prevention and health services available, the Manchester Public Health Nurses Association is planning a health fair for April 13 at Waddell School.

A screening program will be set up to test for diabetes, blood pressure and the anemias.

There will also be booths with educational material on lung diseases, planned parenthood, mental health, and other phases of health.

The fair will be from 2 to 8 p.m. Members of various health agencies and the medical profession will participate.

Health Fair April 13

To update the public on disease prevention and health services available, the Manchester Public Health Nurses Association is planning a health fair for April 13 at Waddell School.

A screening program will be set up to test for diabetes, blood pressure and the anemias.

There will also be booths with educational material on lung diseases, planned parenthood, mental health, and other phases of health.

The fair will be from 2 to 8 p.m. Members of various health agencies and the medical profession will participate.

Health Fair April 13

To update the public on disease prevention and health services available, the Manchester Public Health Nurses Association is planning a health fair for April 13 at Waddell School.

A screening program will be set up to test for diabetes, blood pressure and the anemias.

There will also be booths with educational material on lung diseases, planned parenthood, mental health, and other phases of health.

The fair will be from 2 to 8 p.m. Members of various health agencies and the medical profession will participate.

Health Fair April 13

To update the public on disease prevention and health services available, the Manchester Public Health Nurses Association is planning a health fair for April 13 at Waddell School.

A screening program will be set up to test for diabetes, blood pressure and the anemias.

There will also be booths with educational material on lung diseases, planned parenthood, mental health, and other phases of health.

The fair will be from 2 to 8 p.m. Members of various health agencies and the medical profession will participate.

Health Fair April 13

To update the public on disease prevention and health services available, the Manchester Public Health Nurses Association is planning a health fair for April 13 at Waddell School.

A screening program will be set up to test for diabetes, blood pressure and the anemias.

There will also be booths with educational material on lung diseases, planned parenthood, mental health, and other phases of health.

The fair will be from 2 to 8 p.m. Members of various health agencies and the medical profession will participate.

Health Fair April 13

To update the public on disease prevention and health services available, the Manchester Public Health Nurses Association is planning a health fair for April 13 at Waddell School.

A screening program will be set up to test for diabetes, blood pressure and the anemias.

There will also be booths with educational material on lung diseases, planned parenthood, mental health, and other phases of health.

The fair will be from 2 to 8 p.m. Members of various health agencies and the medical profession will participate.

Health Fair April 13

To update the public on disease prevention and health services available, the Manchester Public Health Nurses Association is planning a health fair for April 13 at Waddell School.

A screening program will be set up to test for diabetes, blood pressure and the anemias.

There will also be booths with educational material on lung diseases, planned parenthood, mental health, and other phases of health.

The fair will be from 2 to 8 p.m. Members of various health agencies and the medical profession will participate.

Health Fair April 13

To update the public on disease prevention and health services available, the Manchester Public Health Nurses Association is planning a health fair for April 13 at Waddell School.

A screening program will be set up to test for diabetes, blood pressure and the anemias.

There will also be booths with educational material on lung diseases, planned parenthood, mental health, and other phases of health.

The fair will be from 2 to 8 p.m. Members of various health agencies and the medical profession will participate.

Health Fair April 13

To update the public on disease prevention and health services available, the Manchester Public Health Nurses Association is planning a health fair for April 13 at Waddell School.

A screening program will be set up to test for diabetes, blood pressure and the anemias.

There will also be booths with educational material on lung diseases, planned parenthood, mental health, and other phases of health.

The fair will be from 2 to 8 p.m. Members of various health agencies and the medical profession will participate.

Health Fair April 13

To update the public on disease prevention and health services available, the Manchester Public Health Nurses Association is planning a health fair for April 13 at Waddell School.

A screening program will be set up to test for diabetes, blood pressure and the anemias.

There will also be booths with educational material on lung diseases, planned parenthood, mental health, and other phases of health.

The fair will be from 2 to 8 p.m. Members of various health agencies and the medical profession will participate.

Health Fair April 13

To update the public on disease prevention and health services available, the Manchester Public Health Nurses Association is planning a health fair for April 13 at Waddell School.

A screening program will be set up to test for diabetes, blood pressure and the anemias.

There will also be booths with educational material on lung diseases, planned parenthood, mental health, and other phases of health.

The fair will be from 2 to 8 p.m. Members of various health agencies and the medical profession will participate.

Health Fair April 13

To update the public on disease prevention and health services available, the Manchester Public Health Nurses Association is planning a health fair for April 13 at Waddell School.

A screening program will be set up to test for diabetes, blood pressure and the anemias.

There will also be booths with educational material on lung diseases, planned parenthood, mental health, and other phases of health.

The fair will be from 2 to 8 p.m. Members of various health agencies and the medical profession will participate.

The Herald Angle

By Earl Vost
Sports Editor

Town had three Olympians

Just for the record department: Manchester has sent three men to past Olympic Games as participants. Joe McCluskey made the trip twice as a steeplechase runner, in 1932 in Los Angeles and 1936 in Berlin, Germany.

Pete Close took part in the 1,500 meters in Rome in 1960 and weightman Bill Burton tossed the discus in the 1948 games in London, England.

McCluskey and Close were products of Manchester High and Fordham University and St. John's University respectively.

Burton, a native of Abington, Mass., graduated from St. Anselm's and resided in Manchester following World War II into Army duty for several years.

Speaking about the Olympics, workers preparing the site for the summer games in Montreal are averaging between \$600 and \$700 weekly. The workforce numbers over 3,500.

Montreal officials originally estimated they could build the necessary facilities and stage the games for \$10 million.

The latest figure on the cost for the summer games, which start July 17, runs to better than \$485 million.

One can't get too excited over the Aetna World Cup's revised opening night program, which will feature a mixed doubles match March 4 before the singles match between Australia and United States players.

Wendy Overton and Ingrid Benizer are not box office magnets and not in the class of Billie Jean King or Chris Evert either.

The women tennis pro will team with Dennis Ralston and Fred Stolle as a preliminary to the opening singles match between representatives of the United States and Australia selected teams.

Mixed doubles matches hardly excite the average tennis fan. For a novelty, and an exhibition, which it will be, it may hold the fan interest.

Last year's celebrity night left much to be desired but celebrity play at Trinity's Ferris Center before the Civic Center opened offered some interesting and entertaining opening matches with the likes of Bill Cobby, Alan King, George Peppard and James Franciscus playing.

Aetna people are looking for four sellout dates. The Saturday afternoon and Sunday afternoon matches are all sold out and only a limited number of tickets remain for the two nights, Thursday and Friday, March 4-5.

Whalers in afternoon game

Fans holding tickets for Sunday's New England Whalers' hockey game are reminded that the starting time has been changed from 7:30 to 4 o'clock. Red-hot Cleveland will supply the opposition... Lou Holtz, new head coach of the New York Jets and former assistant at UConn, is one of the best story-tellers on the chicken and spaghetti circuit. Holtz appeared in Manchester several times while at UConn and had diners literally in stitches with his humor. The funny guy at UConn has too many laughs trying to right the sinking Jets' ship...

Whalers in afternoon game

Fans holding tickets for Sunday's New England Whalers' hockey game are reminded that the starting time has been changed from 7:30 to 4 o'clock. Red-hot Cleveland will supply the opposition... Lou Holtz, new head coach of the New York Jets and former assistant at UConn, is one of the best story-tellers on the chicken and spaghetti circuit. Holtz appeared in Manchester several times while at UConn and had diners literally in stitches with his humor. The funny guy at UConn has too many laughs trying to right the sinking Jets' ship...

Whalers in afternoon game

Fans holding tickets for Sunday's New England Whalers' hockey game are reminded that the starting time has been changed from 7:30 to 4 o'clock. Red-hot Cleveland will supply the opposition... Lou Holtz, new head coach of the New York Jets and former assistant at UConn, is one of the best story-tellers on the chicken and spaghetti circuit. Holtz appeared in Manchester several times while at UConn and had diners literally in stitches with his humor. The funny guy at UConn has too many laughs trying to right the sinking Jets' ship...

Whalers in afternoon game

Fans holding tickets for Sunday's New England Whalers' hockey game are reminded that the starting time has been changed from 7:30 to 4 o'clock. Red-hot Cleveland will supply the opposition... Lou Holtz, new head coach of the New York Jets and former assistant at UConn, is one of the best story-tellers on the chicken and spaghetti circuit. Holtz appeared in Manchester several times while at UConn and had diners literally in stitches with his humor. The funny guy at UConn has too many laughs trying to right the sinking Jets' ship...

Whalers in afternoon game

Fans holding tickets for Sunday's New England Whalers' hockey game are reminded that the starting time has been changed from 7:30 to 4 o'clock. Red-hot Cleveland will supply the opposition... Lou Holtz, new head coach of the New York Jets and former assistant at UConn, is one of the best story-tellers on the chicken and spaghetti circuit. Holtz appeared in Manchester several times while at UConn and had diners literally in stitches with his humor. The funny guy at UConn has too many laughs trying to right the sinking Jets' ship...

Whalers in afternoon game

Fans holding tickets for Sunday's New England Whalers' hockey game are reminded that the starting time has been changed from 7:30 to 4 o'clock. Red-hot Cleveland will supply the opposition... Lou Holtz, new head coach of the New York Jets and former assistant at UConn, is one of the best story-tellers on the chicken and spaghetti circuit. Holtz appeared in Manchester several times while at UConn and had diners literally in stitches with his humor. The funny guy at UConn has too many laughs trying to right the sinking Jets' ship...

Whalers in afternoon game

Fans holding tickets for Sunday's New England Whalers' hockey game are reminded that the starting time has been changed from 7:30 to 4 o'clock. Red-hot Cleveland will supply the opposition... Lou Holtz, new head coach of the New York Jets and former assistant at UConn, is one of the best story-tellers on the chicken and spaghetti circuit. Holtz appeared in Manchester several times while at UConn and had diners literally in stitches with his humor. The funny guy at UConn has too many laughs

Rockets top Celts

HOUSTON (UPI) — Houston's Rudy Tomjanovich called it the dumbest move he'd ever seen on a basketball court.

"I mean really?" he asked. "Fans should know better than to come on the court looking for a fight. But to pick out Dave Cowens to swing at, that's double insanity."

The fight, which disrupted the Houston-Boston NBA game Wednesday night, was brief, thanks to a Cowens' left hook.

"I started when the Celtics' 6-foot-9 center collided with Houston's 6-4 guard, Calvin Murphy, knocking both players off their feet.

When asked his version of the fight, Cowens refused comment. He grimaced when touching a badly bruised left hand where the irate fan kicked him—and a putty left hand.

Murphy didn't hesitate to talk.

"I was still on my face on the floor but when Cowens got up, a big guy ran up and pushed him," Murphy said. "Then Cowens started firing on the guy. One blow sent him to his back. Then Cowens hit him. He was hitting him flush shots in the face. I saw some savage blows. The Rockets' guards would fly back. I see that type of play a lot. It incites the fans," he said. Murphy regretted his decision after Wednesday's meeting. "It wasn't comprehensive, but it will serve as a basis for future talks on Friday."

John Gaherin, counsel for the owners, described the meeting as "constructive" and pointed out that the Player Relations Committee, representing the owners, is willing to follow Miller to any location suited his convenience in an effort to continue the negotiations. The owners and players are trying to reach an agreement on the basic contract, which expired last Dec. 31.

Oliver ruled earlier this month that Seitz had the authority to declare the pitchers free of contract obligations to their teams after playing the 1975 season without signing contracts.

Meanwhile, Commissioner Bowie Kuhn said, "baseball cannot function under the Messersmith decision."

"This points up an area where Mr. Miller and I are in agreement," said Kuhn. "He knows baseball needs a reserve system just as I do. He knows baseball can't live with a Messersmith decision. He has said repeatedly that he has to be a reserve system of some sort."

HOUSTON (UPI) — The Major League Players Association today studied a "skeleton" form of the clubowners' ideas concerning a modification of the reserve clause with both sides hoping it will serve as a basis for future talks.

"The owners presented us with a skeleton form of their ideas," said Marvin Miller, executive director of the Players Association, after Wednesday's meeting. "It wasn't comprehensive, but it will serve as a basis for future talks on Friday."

John Gaherin, counsel for the owners, described the meeting as "constructive" and pointed out that the Player Relations Committee, representing the owners, is willing to follow Miller to any location suited his convenience in an effort to continue the negotiations. The owners and players are trying to reach an agreement on the basic contract, which expired last Dec. 31.

Oliver ruled earlier this month that Seitz had the authority to declare the pitchers free of contract obligations to their teams after playing the 1975 season without signing contracts.

Meanwhile, Commissioner Bowie Kuhn said, "baseball cannot function under the Messersmith decision."

"This points up an area where Mr. Miller and I are in agreement," said Kuhn. "He knows baseball needs a reserve system just as I do. He knows baseball can't live with a Messersmith decision. He has said repeatedly that he has to be a reserve system of some sort."



CALVIN MURPHY

Ball players study plan

NEW YORK (UPI) — The Major League Players Association today studied a "skeleton" form of the clubowners' ideas concerning a modification of the reserve clause with both sides hoping it will serve as a basis for future talks.

"The owners presented us with a skeleton form of their ideas," said Marvin Miller, executive director of the Players Association, after Wednesday's meeting. "It wasn't comprehensive, but it will serve as a basis for future talks on Friday."

John Gaherin, counsel for the owners, described the meeting as "constructive" and pointed out that the Player Relations Committee, representing the owners, is willing to follow Miller to any location suited his convenience in an effort to continue the negotiations. The owners and players are trying to reach an agreement on the basic contract, which expired last Dec. 31.

Oliver ruled earlier this month that Seitz had the authority to declare the pitchers free of contract obligations to their teams after playing the 1975 season without signing contracts.

Meanwhile, Commissioner Bowie Kuhn said, "baseball cannot function under the Messersmith decision."

"This points up an area where Mr. Miller and I are in agreement," said Kuhn. "He knows baseball needs a reserve system just as I do. He knows baseball can't live with a Messersmith decision. He has said repeatedly that he has to be a reserve system of some sort."

BOWLING

BLOSSOMS—Lucille Hendricks 130, Ann Grogan 125, Lorraine Swift 129-131-361, Betty Daniel 146, Vicki Steeves 343.

ZODIAC—Cheryl Sutyla 175, Shirley Belasky 175-463, Mara Stephens 185-453, Donna Lee Kay 189-458, Laura Wheatley 180-466, Donna Mieczkowski 176-199-546, June Eecher 453.

COMMERCIAL—Ron Sponheimer 161-164-454, Nick Nicola 154-137-425, Carl Bajucus 147-162-424, Don McAllister 158-414, Rick Johnson 169-352, Tony Yacono 135-374, Bud Wickham 177-392, Rick Nicola 146-386, Ted Lawrence 369, Tim Flynn 148-364, Ed Miller 146-555, Lee Prior 148-301, George Burgess 152-141-405, Sam McAllister 170-394, Bill McAllister 170-394, Fred Riccio 139-143-386, Doug Scruton 142-361, Bill MacMullen 136-381, Mike Kelly 142-358, Charles Clapper 371, Al Napolitano 360, Ken Osborne 150-388, Dave Kostolic 350.

ST. JAMES—Debbie Kennedy, Joe Downs and Tim Wrobel won matches for Manchester.

Results: 101—Guimond (E) pinned Wilson 2:59, 108—Tracy (E) dec. Cordera 10:2, 115—Chandler (M) pinned Fealtai 3:46, 122—Able (E) dec. Smith 4:19, 129—Girelli (M) dec. Gagnon 16:1, 135—Courtis (E) dec. Luz 13:4, 141—Derevianka (M) pinned Levesque 4:49, 148—Marshall (M) drew with Moran 6:6, 158—Brezinski (M) dec. Laesse 2:1, 170—Unlimited—T. Jones (M) dec. Strouth 16:6.

Men's volleyball

National Division Standings — Conn. Bank & Trust 28-11, Watkins 27-12, Lloyd's Auto Parts 9-30, Fantastiks 8-31, Economy Electric 7-32.

American Division Standings — ABA Tool 33-7, Latvians 30-6, P&W 32-7, North Enders 12-24, South Enders 6-33.

Week's Results: CBT 3, Fantastiks 0; ABA 3, Economy 0; Latvians 3, Watkins 0; P&W 3, North Enders 0; South Enders 2, Lloyd's 1.

Basketball

Midjet Action last night at the Community Y saw Modern Janitorial win Multi Circuits 1, 21-20, and VPW down Wyman Oil 37-21.

Earl Langer had eight points and E.J. Pallen four for Janitorial while Paul Machiewicz and Bob Madere each had eight points for Multi. Dave Johnson had eight markers, Tim Shea six and John Dolone four for VPW while Peter Robinson had seven and Mark Wright six for Wyman.

SCOREBOARD

WHA	Smythe Division	West Division	East Division	
W L T Pts	Chicago 23 16 16 62 Vancouver 21 20 10 52 St. Louis 19 27 7 46 New England 22 27 5 49 Winnipeg 22 21 1 45 Cincinnati 21 30 2 44	W L T Pts Montreal 40 7 8 82 Los Angeles 29 24 4 62 Pittsburgh 29 27 7 66 Washington 29 22 5 68 San Diego 25 25 4 56	W L T Pts Boston 34 11 9 77 Buffalo 31 15 9 71 Toronto 23 21 11 57 Edmonton 20 24 3 43 Toronto 15 25 6 40 Ottawa 14 26 1 29	W L T Pts New York Islanders 33 10 7 66 Philadelphia 28 10 10 66 New York Rangers 28 14 8 60 NY Rangers 20 28 6 66

NBA	Eastern Conference	Atlantic Division	Central Division	Western Conference	Pacific Division	
W L T Pts	Boston 35 15 7 80 Buffalo 32 21 8 64 Philadelphia 32 21 8 64 New York 28 29 4 73	W L T Pts New York Knicks 33 18 11 73 Boston Celtics 32 21 8 64 Philadelphia 76ers 32 21 8 64 New York Nets 28 29 4 73	W L T Pts New York Knicks 33 18 11 73 Boston Celtics 32 21 8 64 Philadelphia 76ers 32 21 8 64 New York Nets 28 29 4 73	W L T Pts Los Angeles Lakers 33 18 11 73 Golden State 32 21 8 64 Portland Trail Blazers 32 21 8 64 San Antonio Spurs 28 29 4 73	W L T Pts Los Angeles Lakers 33 18 11 73 Golden State 32 21 8 64 Portland Trail Blazers 32 21 8 64 San Antonio Spurs 28 29 4 73	W L T Pts Los Angeles Lakers 33 18 11 73 Golden State 32 21 8 64 Portland Trail Blazers 32 21 8 64 San Antonio Spurs 28 29 4 73

AGWAY

Make your rooms "bloom"

1200 custom mixed Agway "garden fresh" colors to choose from... what better way of welcoming Spring!

Agway Super Latex Flat Paint \$749 (reg. \$949)

Agway Economy White Flat Latex Paint \$549 (reg. \$699)

Werner 5' Aluminum Step Ladder \$1495 (reg. \$1795)

Roller, Tray and Brush Sets \$295 (reg. \$395)

AGWAY, Inc. 540 NEW STATE ROAD, Buckland 643-5123

AGWAY SUPER LATEX

SAVE \$2

ONE U.S. GALLON FLAT ACRYLIC INTERIOR

AGWAY ECONOMY WHITE FLAT LATEX PAINT

SAVE 10% per gallon Special Introductory Offer

Werner 5' Aluminum Step Ladder

Roller, Tray and Brush Sets

AGWAY, Inc. 540 NEW STATE ROAD, Buckland 643-5123

Vautour takes pupil services post

South Windsor JUDY KUEHNEL Dr. J.A. Camille Vautour has been named director of pupil services for South Windsor. He will fill the vacancy left by Matthew Borrelli.

Dr. Vautour, for the past two years has been pupil services director for Tolland. He is expected to begin his duties here in about 30 days at a salary of \$22,000.

During his years in Tolland, Dr. Vautour is credited with substantial expansion of Tolland's special education program. In 1970 Tolland had only one learning disabilities psychologist, six guidance counselors and four guidance teachers. Today the town has five learning disabilities teachers, two speech therapists, a school psychologist, six guidance counselors and two teachers for the emotionally handicapped.

Tolland School Supt. Kenneth MacKenzie said "professional advancement." He is "intrigued" by the alternative education program for high school students already in progress here.

Leader promises big role for agency

Attending the recent planning meeting in Willimantic were, left to right, Betty Gardner, State Sen. Richard Scheller, Frank Connolly, and Dan Manley. (Herald photo by Shea)

MONICA SRECH F. Scheller, chairman of the Legislature's State and Urban Development Committee, spoke recently at the Windham Regional Planning Agency's annual meeting.

He said planning agencies could play an ever increasing role in solving problems that towns have created for themselves in the last 100 years.

Sen. Scheller from Essex, Conn. said, "We can look back at the last 200 years and see that it breaks down neatly into two 100 year segments. The first 100 years were spent pushing back our frontiers. The second 100 years were spent in economic development. I believe we will have to learn to live with and to bring under control this economic development."

"I am opposed to economic growth that spoils our land, water and air. But I think we can have our cake and eat it too. We are on our way to cleaning up many of our mistakes of the past and we don't have to stop growing to do this. Plans in problems transcend town borders, he said. The state should set down broad guidelines for planning."

"I see the regional planning agency serving as a bridge between local planning and statewide goals," he said.

"I believe fully in the value of local government but 100 towns, each going in a different direction can leave a legacy of chaos. The regional planning agency must be made an integral part of the state guidelines."

Attending the dinner from Coventry were Tom Planner Frank Connolly, Betty Gardner, secretary on the Planning and Zoning Commission, and Dan Manley, representative of the agency from Coventry.

Judge blocks sale of bankrupt Giants

SAN FRANCISCO (UPI) — The Toronto Giants won't be playing in the National League during the coming season, a federal judge ruled.

A Superior Court judge issued a preliminary injunction Wednesday blocking the sale of the bankrupt San Francisco Giants to a group of wealthy investors in the Canadian League.

Judge John Bensen blocked another cross-country move by the Giants when an eleven-hour bid of \$8 million in cash was made by Bob Lurie, a local sportsman, financier, and Bob Short, former owner of the American League's Washington-Texas entry.

Although the pair has not officially purchased the team, they have taken control of the franchise through a series of legal maneuvers.

Major League Baseball put together the proposed purchase on Feb. 11 before Benson's deadline.

Matmen snap streak

Snapping a five-meet losing streak, Manchester High upset Enfield High, 32-25, in CCIL wrestling action last night at Clarke Arena.

The Indian matmen, now 5-6 for the season, visited Penney High in East Hartford Saturday.

Corky Chandler, Al Girelli, Jim Brezinski, Tom Jones and Co-captains Dave Derevianka and Bob Hawkes won their matches for Manchester with sophomore Doug Marshall gaining a draw in the 148-pound division. The set-back leaves Enfield with an 8-4 record in jayvee action. Eric Randall, Jerry Kennedy, Joe Downs and Tim Wrobel won matches for Manchester.

AGWAY

AGWAY SUPER LATEX

SAVE \$2

ONE U.S. GALLON FLAT ACRYLIC INTERIOR

AGWAY ECONOMY WHITE FLAT LATEX PAINT

SAVE 10% per gallon Special Introductory Offer

Werner 5' Aluminum Step Ladder

Roller, Tray and Brush Sets

AGWAY, Inc. 540 NEW STATE ROAD, Buckland 643-5123

FINAL EXPENSE LIFE INSURANCE

FINAL EXPENSE LIFE INSURANCE \$500 to \$5000* EVERYONE ACCEPTED BETWEEN AGES 40-87

*Depending on age

Write and give us your date of birth

LIFE OF AMERICA INSURANCE CORP OF BOSTON 40 Broad St., Boston, Mass. 02109, Dept. 08-NH

— OR — CALL TOLL FREE: 1-800-252-1710

MANCHESTER EVENING HERALD, Manchester, Conn., Thurs., Feb. 12, 1976 - PAGE THIRTEEN

Fishing's great in the WANT ADS

Men's and Young Men's Washed Fashion Jeans Our Reg. 9.99 788

Ladies' Leather-Like Jackets Our Reg. 19.99 1470

Boys' Patch Knit Shirts 349

Machine Washable Jeans \$5 Special

Girls' Placket Front Super Style Shirts and 100% Polyester Pull-On Slacks Your Choice Only 399

Ladies' Long and Short Sleeve Blouses 744

Pre-Washed Denim Fashion Jeans 880

Women's Tennis Sneakers 279

Novelty Tier Curtains 24 INCH 333

20% OFF OUR ENTIRE STOCK OF Famous Makers, No Iron Percalene Sheets 399

Navajo Design 100% Nylon Pile Accent Rug 386

Round-A-Bolsters Toss Pillows & Leisure Loungers Your Choice 179

Polyester Doubleknits 187

Dacron® Polyester Interlock and Pique Doubleknit Prints 222

Sportswear Fabrics 197

Fully Quilted Floral Print BEDSPREADS 1477

Flannel Back Tablecloths 52x52 299

MANCHESTER 1145 Tolland Turnpike

SALE: Thursday thru Saturday Hours: 10 a.m. to 9 p.m.

Quake fund drive planned

The Student Senate in conjunction with the Civitan Collegiate Club at Manchester Community College, will conduct a fundraising drive Friday and Saturday to benefit Guatemala earthquake victims.

Faculty East Building at MCC. On Saturday between 10 a.m. and 5 p.m., donation centers will be located in front of the following stores: Regal Men's Shop, Main St.; D & L, Manchester Parkade; and Caldor of Manchester.

On Friday, the drive will take place at all entrances of the Bidwell St. campus of MCC from 8 a.m.-7 p.m. Cash and check donations may also be brought to the Voluntary Action office in room 113 of the

Proceeds will be forwarded to the Friends of Children a volunteer organization, which will purchase medical supplies for quake survivors. Efforts for the housing of orphaned children will also be made.

Bill would take 'guilt' out of unwed fatherhood

HARTFORD (UPI) - The Connecticut legislature is considering taking the "guilt" out of unwed fatherhood by changing the wording of the law regarding paternity suits.

The bill's purpose was "To take the aura of guilt out of paternity proceedings which are a civil action." Civil action, unlike criminal action, does not describe the circumstances of such cases.

March to be busy one for directors

By SOL R. COHEN

In addition to the two regular meetings it will conduct in March, the Manchester Board of Directors already has scheduled four special meetings with still more, including budget sessions, possible.

On March 3 at 8 p.m. it will meet with the Board of Education, as required by the town charter. It will hear an explanation of the \$14,150,063 appropriation the school board is seeking for 1976-77.

Director Phyllis Jackson told Town Manager Robert Weiss Tuesday night, "Pass on the word (to the school board) we'd like a little more information than we received last year. Their budget is difficult to follow and to see where to cut. Also, I'd like to know whether we will be expected to subsidize the cut in Project Concern funding the school board is adopting."

On March 2 at 7 p.m., prior to their 8 p.m. regular meeting, the directors will meet with the town's Advisory Data Processing Committee - to hear its recommendations.

On March 9 at 7 p.m., before their 8 p.m. regular meeting, the directors will meet with a representative of the CPEC (Connecticut Public Expenditures Council), to learn of advanced methods for budget making.

And, also on March 9 before their 8 p.m. regular meeting, the directors will meet with the Human Relations Commission - to discuss its role in the community and its involvement in Manchester's Affirmative Action Plan.

To be eligible for most federal grants, a community must have an acceptable Affirmative Action Plan - guaranteeing it doesn't discriminate because of sex, color, age, etc.

The Human Relations Commission is seeking a leading role in preparing and monitoring the plan, including staffing and funding.

Several directors, notably Vivian Ferguson, Phyllis Jackson and Paul Willhide, oppose giving the commission a leading role.

Mrs. Ferguson Tuesday night repeated her opposition. "The commission," she said, "is not an administrative agency. It is an appointed commission and its role is strictly advisory. Monitoring the Affirmative Action Plan and implementing it is an administrative role through the town's personnel office. Following that, it is the function of the Board of Directors to assess the administration's role."

Mrs. Jackson remarked on requirements for an Affirmative Action Plan. "It's ridiculous," she said, "that people out of work in Manchester don't get the jobs available under

federal funding. Instead, because of federal requirements, people are sent out from Hartford to fill the jobs. Local people should get preference, yet, they can sign up for them only in Hartford and seldom get the federal funds."

Willhide said, "The ultimate objective under federal funding is to hire and promote to higher positions blacks and women - in the same proportion as they are to the population of the town or city. Now, the Hartford population is included in the area population. In addition, Affirmative Action commitments of the same sort are required of contractors and suppliers getting those federal funds."

"The Affirmative Action Plan must be spelled out right down the line. I can't see the Human Relations Commission handling it. It's just too complex."

Higher taxes, cutbacks seen as alternatives

WATERBURY (UPI) - Gov. Ella T. Grasso says if lawmakers fail to approve her budget proposal higher taxes or cuts in essential services are in the offing.

"The alternatives to my budget proposals are higher taxes or cuts in essential services, or a combination of both," she said Wednesday night at a budget hearing.

"As the people of our state and nation begin a slow, but hopefully steady recovery from the trauma of the recession, government leaders have a responsibility to keep in mind the needs of the citizenry to a minimum," she said.

"Equally they have a responsibility to avoid increases in the overall tax burden on our citizens," she said. She said her budget included a spending increase of 6.4 per cent, with 75 per cent of that coming from mandated expenses. She said in the areas where state officials have control the spending increase was less than two per cent.

Chamber unveils plans for Rockville

BARBARA RICHMOND

The Rockville Area Chamber of Commerce at its Wednesday meeting unveiled a plan to revitalize downtown Rockville.

Andrew Tricarico, chairman of the chamber's Economic and Development Committee, appointed subcommittees several weeks ago to work on renewal plans.

Long a matter of concern to Rockville businessmen and residents, the revitalization of the downtown section has been in the planning stage for some time.

The proposal not only listed the debit side of the picture but also the credit side. Some of the recommendations encompassed were from a proposal presented about two years ago by a committee of Rockville citizens.

Tricarico said the committee feels improving the traffic and parking problems should take top priority if revitalization is to begin.

Streets; the green on Park Place; Henry Park; Paper Mill Pond and its surrounding areas.

Also listed as assets are the large homes in the Talcott Park area. The committee also recommended that some of the other existing buildings be preserved and others renovated.

Also listed as assets are the churches in the center, Union Congregational and St. Bernard's, both considered landmarks of the center.

The committee also is considering plans for the use of some vacant commercial buildings. The former Palace Theater on School St. could be used as a legitimate theater, a theater for children's movies, or an auction facility.

Tricarico's report said the building on E. Main St., which served as the rear of the Memorial Building to expand the parking lot; and linking the Union Church parking lot to one at the rear of the Priehard Building, are some of the long-range suggestions of the committee.

Some of Rockville's assets include: Talcott Park on Elm and Park

Streets; the green on Park Place; Henry Park; Paper Mill Pond and its surrounding areas.

Also listed as assets are the large homes in the Talcott Park area. The committee also recommended that some of the other existing buildings be preserved and others renovated.

Also listed as assets are the churches in the center, Union Congregational and St. Bernard's, both considered landmarks of the center.

The committee also is considering plans for the use of some vacant commercial buildings. The former Palace Theater on School St. could be used as a legitimate theater, a theater for children's movies, or an auction facility.

Some of Rockville's assets include: Talcott Park on Elm and Park

Streets; the green on Park Place; Henry Park; Paper Mill Pond and its surrounding areas.

Also listed as assets are the large homes in the Talcott Park area. The committee also recommended that some of the other existing buildings be preserved and others renovated.

Also listed as assets are the churches in the center, Union Congregational and St. Bernard's, both considered landmarks of the center.

The committee also is considering plans for the use of some vacant commercial buildings. The former Palace Theater on School St. could be used as a legitimate theater, a theater for children's movies, or an auction facility.

Some of Rockville's assets include: Talcott Park on Elm and Park

Streets; the green on Park Place; Henry Park; Paper Mill Pond and its surrounding areas.

Also listed as assets are the large homes in the Talcott Park area. The committee also recommended that some of the other existing buildings be preserved and others renovated.

Also listed as assets are the churches in the center, Union Congregational and St. Bernard's, both considered landmarks of the center.

The committee also is considering plans for the use of some vacant commercial buildings. The former Palace Theater on School St. could be used as a legitimate theater, a theater for children's movies, or an auction facility.

Some of Rockville's assets include: Talcott Park on Elm and Park

Streets; the green on Park Place; Henry Park; Paper Mill Pond and its surrounding areas.

Also listed as assets are the large homes in the Talcott Park area. The committee also recommended that some of the other existing buildings be preserved and others renovated.

Also listed as assets are the churches in the center, Union Congregational and St. Bernard's, both considered landmarks of the center.

The committee also is considering plans for the use of some vacant commercial buildings. The former Palace Theater on School St. could be used as a legitimate theater, a theater for children's movies, or an auction facility.

Ladies aid vehicle purchase

Bolton

DONNA HOLLAND
A check for \$1,000 was presented to Donato Rattazzi by Germaine Morin during a recent dinner dance at Herick Memorial Park for members of the Bolton Volunteer Fire Department and Women's Auxiliary of the Bolton Volunteer Fire Department.

Rattazzi is chief of the BVFD and Mrs. Morin is president of the WABVFD.

The money will help defray the cost of a rescue service vehicle being purchased by the BVFD.

and broke his leg. Rattazzi had responded to a call and was enroute home when he fell. While Rattazzi is laid up, Robert Morin is acting chief.

The department is purchasing a new one-ton Dodge chassis from Vernon Dodge. It will cost \$6,800. Equipment for it will cost \$3,000.

The vehicle will respond to all calls including automobile accidents and fires, house fires, brush or woods fires and emergency medical care in the home. It is not a patient carrying vehicle.

town shortly after its arrival for the legal fee of \$1,000.

Members of the BVFD earned money by sponsoring their annual firemen's ball, filling swimming pools, selling Christmas trees and their annual peach festival.

Rattazzi said training of department volunteers will continue with priority being given to a rescue squad. The volunteers will be trained in town so all can benefit.

He said in a special group of volunteers will be trained in the art of extraction.

Board may cut teaching jobs

South Windsor

JUDY KUCHNER
The Board of Education is expected to soon make public the motions passed Tuesday regarding evaluation of teachers.

The board met in executive session for more than an hour and one-half Tuesday. State law requires the board make public the results of any vote within 48 hours.

It is believed most of the teacher cuts next school year will be handled through attrition.

Speculation has it however that two to four teachers will not be offered

contracts next year. The school board is required to notify the teachers by March 1.

The federal government is paying for an ever-increasing share of the country's welfare programs. The Conference Board notes, Federal payments covered 63 per cent of total public aid expenditures in 1974, up from 44 per cent in 1960. The cost of the major public assistance programs - including Aid to Families with Dependent Children, medical vendor payments and assistance to the aged, blind and disabled - rose from \$2.5 billion in 1960 to over \$25 billion in 1974. It is expected to top \$31 billion in 1976.

Krause Florist & Greenhouses
LARGEST RETAIL GROWERS IN MANCHESTER
Call Manchester 643-9559
621 HANFORD ROAD, MANCHESTER

help beat inflation

Nationwide Insurance has an answer to the high cost of inflation. It's Nationwide Homemaker's insurance with built-in inflation protection.

Based on U.S. Department of Commerce cost index figures, Nationwide automatically adjusts your coverage each month - so that your home is covered today for what it's worth today.

Call your Nationwide agent now for details.

STAN BYSEWICZ
357 Center St. • 649-2891

ROBERT ANDERSON

NATIONWIDE INSURANCE
Nationwide is on your side
Nationwide Mutual Fire Insurance Co.
Home Office: Columbus, Ohio

WIN A VACATION CRUISE FOR 2

DEPOSIT ONLY AT:

KING'S
THE THANK YOU STORE
PARKADE

Name _____
Address _____
Town _____ Phone _____

WIN A VACATION CRUISE FOR 2
DEPOSIT ONLY AT:

7-DAY "LINGER LONGER" CRUISE
ON THE **DORIC TO BERMUDA** OR **OCEANIC TO NASSAU**

7-Day Cruise For 2 Includes:

- HOME LINES
Leaves New York Saturdays
April Thru June 1976
- WHILE IN PORT
Docking in A Reserved Berth On Hamilton's Front Street in Bermuda
OR in Nassau in The Bahamas With The Ship Your Hotel And Deluxe Restaurant While You On Shore.
- WHILE ON BOARD
Live in Superior Cabins For 2
- GOURMET FEASTING
4 Meals Daily
Live entertainment nightly, movies, dancing to several orchestras, special programs and contests arranged by the Cruise Staff...lectures and slides on ports to be visited...cocktail parties...swimming in life-lined pools...shuffleboard...ping pong...fully equipped gymnasium

Let Us Arrange Your Next Vacation Or Business Trip.

LaBonne travel 647-9949
67 East Center St., Manchester • Hours: Mon. thru Fri. 9-5 / Sat. 10-1

HERE'S HOW YOU ENTER... To enter simply deposit the "Vacation Cruise" coupons at the store listed on the coupon. Coupons left at The Herald will not be accepted. You may enter as many times as you wish. The winner must be at least 18 years of age. Coupon will appear in The Herald twice a week on Tuesdays and Thursdays: Jan. 12, 19, 20, 27, 28; Feb. 3, 5, 10, 12, 17, 19. Coupon entries will be picked up weekly after noon on Jan. 19, 26; Feb. 2, 9, 16, 23. A weekly drawing will be held and two winners from each store the trip will be announced February 23. The Herald reserves the right to be sole judge of the contest.

Sponsored By: Home Lines, LaBonne Travel, The Manchester Herald And Area Merchants...

WIN A VACATION CRUISE FOR 2
DEPOSIT ONLY AT:

AGWAY, Inc.
540 NEW STATE ROAD, BUCKLAND
643-5123

Name _____
Address _____
Town _____ Phone _____

WIN A VACATION CRUISE FOR 2
DEPOSIT ONLY AT:

COUNTRY LOFT
HILLBLANKETS OF TUNBROOK ARE AT 254 BROAD ST., MANCHESTER
Merchants in Early American

Name _____
Address _____
Town _____ Phone _____

WIN A VACATION CRUISE FOR 2
DEPOSIT ONLY AT:

MINI AUTO CARE
328 W. MIDDLE TPKE. MANCHESTER

Name _____
Address _____
Town _____ Phone _____

WIN A VACATION CRUISE FOR 2
DEPOSIT ONLY AT:

THE CRAFT & HOBBY CENTER
778 MAIN STREET MANCHESTER

Name _____
Address _____
Town _____ Phone _____

WIN A VACATION CRUISE FOR 2
DEPOSIT ONLY AT:

NASSIFF ARMS CO.
991 MAIN STREET, MANCHESTER
"House of Sports Since 1944"

Name _____
Address _____
Town _____ Phone _____

WIN A VACATION CRUISE FOR 2
DEPOSIT ONLY AT:

Mari-Mads
Youth Specialty Shop
757 Main Street in Downtown Manchester

Name _____
Address _____
Town _____ Phone _____

WIN A VACATION CRUISE FOR 2
DEPOSIT ONLY AT:

CONSUMER SALES
MANCHESTER PARKADE NEXT TO FORBES AND WALLACE

Name _____
Address _____
Town _____ Phone _____

WIN A VACATION CRUISE FOR 2
DEPOSIT ONLY AT:

Living room interior
MANCHESTER 519 EAST MIDDLE TPKE
646-4455

Name _____
Address _____
Town _____ Phone _____

WIN A VACATION CRUISE FOR 2
DEPOSIT ONLY AT:

B.D. PEARL & Son
649 MAIN STREET, MANCHESTER, CONN.
PHONE 643-2171
"Quality Service and Genuine Parts Since 1941"

Name _____
Address _____
Town _____ Phone _____

WIN A VACATION CRUISE FOR 2
DEPOSIT ONLY AT:

REGAL MEN'S SHOP
MANCHESTER "THE COMPLETE MEN'S STORE"
VERNON TRICITY PLAZA 643-2978

Name _____
Address _____
Town _____ Phone _____

WIN A VACATION CRUISE FOR 2
DEPOSIT ONLY AT:

20th CENTURY TV
176 BURNSIDE AVE. EAST HARTFORD • 528-1554

Name _____
Address _____
Town _____ Phone _____

WIN A VACATION CRUISE FOR 2
DEPOSIT ONLY AT:

WHOLE SALE TIRE
357 BROAD STREET MANCHESTER • 643-2444

Name _____
Address _____
Town _____ Phone _____

WIN A VACATION CRUISE FOR 2
DEPOSIT ONLY AT:

OPTICAL Style Bar, Inc.
763 Main St. Manchester, Conn. 643-1191
191 Main St. Manchester, Conn. 643-1900

Name _____
Address _____
Town _____ Phone _____

WIN A VACATION CRUISE FOR 2
DEPOSIT ONLY AT:

MANCHESTER MOTOR SALES
512 W. CENTER ST., MANCHESTER

Name _____
Address _____
Town _____ Phone _____

WIN A VACATION CRUISE FOR 2
DEPOSIT ONLY AT:

House & Hafe
YOU'RE IMPORTANT TO US!
945 MAIN STREET DOWNTOWN MANCHESTER

Name _____
Address _____
Town _____ Phone _____

WIN A VACATION CRUISE FOR 2
DEPOSIT ONLY AT:

SHOOR Jewelers
917 MAIN STREET, MANCHESTER

Name _____
Address _____
Town _____ Phone _____

WIN A VACATION CRUISE FOR 2
DEPOSIT ONLY AT:

VITNER'S GARDEN CENTER
1 Tolland Tpke Manchester
649-2623 Mon., Tues., Thurs., Fri., Sat. 9-5 Sun. 11-4 - Closed Wed.

Name _____
Address _____
Town _____ Phone _____

WIN A VACATION CRUISE FOR 2
DEPOSIT ONLY AT:

FRANK'S
TURNPIKE MANCHESTER

Name _____
Address _____
Town _____ Phone _____

CB RADIOS
IN STOCK
Cobra
ROYCE FANON/COURIER
Regency
SALES • SERVICE • INSTALLATION
Turnpike
273 W. MIDDLE TPKE., MANC.
OPEN Mon.-Tue. 9-9 Wed.-Fri. 9-9 Sat 9-9
NEXT TO STOP & SHOP

REGAL'S OF MANCHESTER
BIG TALL
Fashions for Men
903 MAIN ST., MANCHESTER
OPEN THURSDAYS UNTIL 9 P.M.
MASTER CHARGE

O-D ENTERPRISES
YEAR ROUND TAX SPECIALISTS
STATE - FEDERAL - LOCAL
EXECUTIVE TAX SERVICES
• INDIVIDUAL
• PARTNERSHIP
• CORPORATE
Don't let low tax preparation fees sway you into losing valuable deductions. Quality costs more but end results pay you many times over.
644-0765

Give your Valentine a "loving" plant from
The Greenhouse
315 Broad St., Manchester
(across from the Post Office)
DAILY 10-6 SUN 10-4
THURS 9-9
649-7370



THIS MORNING BILLY LAWTON SAID HE MISSES THE OLD DAYS WHEN HE WAS MEAN AND BOTTEN. SO I GAVE HIM A SWACK JUST FOR OLD TIMES SAKE. NOW MY CONSCIENCE IS KILLING ME.

HEATING-PLUMBING 26 SEWERLINES, sink lines, cleaned by electric cutters... NO JOB too small, toilet repairs, heating repairs... FLOORING 36 FLOOR Sanding - Refinishing... ANTQUES 48

APARTMENTS FOR RENT 52 ELLINGTON Penny Hill Apartments - 3 1/2 large rooms... COVENTRY - ultra modern apartments in former church building... ANDOVER - three room, furnished apartment...

MANCHESTER - three room apartment, second floor of a two-family house... MANCHESTER - Four room modern first floor office apartment... MANCHESTER - luxury two bedroom apartment...

MANCHESTER - two room apartment, second floor of a two-family house... MANCHESTER - one and one-half room apartment... MANCHESTER - one and one-half room apartment...

MANCHESTER - East Hartford Town line, Beacon Hill Apartments - One and one-half room apartment... MANCHESTER - One and one-half room apartment... MANCHESTER - One and one-half room apartment...

MANCHESTER - One and one-half room apartment, second floor of a two-family house... MANCHESTER - One and one-half room apartment... MANCHESTER - One and one-half room apartment...

MANCHESTER - One and one-half room apartment, second floor of a two-family house... MANCHESTER - One and one-half room apartment... MANCHESTER - One and one-half room apartment...

YOUR MANCHESTER NEW CAR DEALERS invite YOU and YOUR FAMILY to its gala PRESIDENT'S BIRTHDAY SALE

4 DAYS LEFT! To get in on one of the BIGGEST SALES this area has ever seen...

FREE GIFTS Given With Every New or Used Car Purchased! Your Choice of: G.E. Toast-A-Brown Oven, Timex Quartz Watch for Men, Timex Electric Watch for Ladies, Taxco Instrument Calculator, Model 12550-2

Wide Selections of New and Used Cars on Sale Now MANCHESTER AUTOMOBILE DEALERS ASSOCIATION

OFFICE SPACE FOR RENT 250 square feet, center of Manchester, air conditioning and parking. Call 643-9551.

GET 100 GALLONS OF GAS AND YOUR BEST DEAL ON A NEW BUICK AT S&S BUICK'S BIRTHDAY SELL-ABRATION!

COMPLETED GM REPAIRS • COLLISION • MECHANICAL WE SERVICE ALL GENERAL MOTORS CARS AND TRUCKS

S & S BUICK "A Different Kind of Car Dealer" 81 ADAMS ST., MANCHESTER (Open Even.) 649-4571

COMPLETE GM REPAIRS • COLLISION • MECHANICAL WE SERVICE ALL GENERAL MOTORS CARS AND TRUCKS

Dear Abby By Abigail Van Buren

DEAR ABBY: My ex-husband's parents who live far away insist upon sending my son Christmas and birthday gifts, and I wish they would stop.

DEAR ABBY: I have a relative who cannot make a statement without using vulgar or profane language. He says he has the right to use any kind of language...

DEAR ABBY: Several years ago, a guy I went with gave me a gold charm bracelet. I'll call him "Pete."

DEAR UN: I'd return the bracelet to Pete.

DEAR ABBY: I'm not being realistic because so many people know about my first marriage that someone is sure to tell him. However, I don't want Jimmy to know just yet.

DEAR ABBY: I'm not being realistic because so many people know about my first marriage that someone is sure to tell him. However, I don't want Jimmy to know just yet.

DEAR ABBY: I'm not being realistic because so many people know about my first marriage that someone is sure to tell him. However, I don't want Jimmy to know just yet.

DEAR ABBY: I'm not being realistic because so many people know about my first marriage that someone is sure to tell him. However, I don't want Jimmy to know just yet.

Seafaring

CROSSWORD PUZZLE: ACROSS 1. Lighthouse, 2. Fish, 3. Underwear, 4. Log, 5. Log, 6. Log, 7. Log, 8. Log, 9. Log, 10. Log, 11. Log, 12. Log, 13. Log, 14. Log, 15. Log, 16. Log, 17. Log, 18. Log, 19. Log, 20. Log, 21. Log, 22. Log, 23. Log, 24. Log, 25. Log, 26. Log, 27. Log, 28. Log, 29. Log, 30. Log, 31. Log, 32. Log, 33. Log, 34. Log, 35. Log, 36. Log, 37. Log, 38. Log, 39. Log, 40. Log, 41. Log, 42. Log, 43. Log, 44. Log, 45. Log, 46. Log, 47. Log, 48. Log, 49. Log, 50. Log, 51. Log, 52. Log, 53. Log, 54. Log, 55. Log, 56. Log, 57. Log, 58. Log, 59. Log, 60. Log, 61. Log, 62. Log, 63. Log, 64. Log, 65. Log, 66. Log, 67. Log, 68. Log, 69. Log, 70. Log, 71. Log, 72. Log, 73. Log, 74. Log, 75. Log, 76. Log, 77. Log, 78. Log, 79. Log, 80. Log, 81. Log, 82. Log, 83. Log, 84. Log, 85. Log, 86. Log, 87. Log, 88. Log, 89. Log, 90. Log, 91. Log, 92. Log, 93. Log, 94. Log, 95. Log, 96. Log, 97. Log, 98. Log, 99. Log, 100. Log.

Win at Bridge Ace lead brings slam home

When South rebid three hearts and then four clubs, North simply went back three and four spades. He wanted to discourage his partner who apparently was heading for a slam somewhere.

DEAR ABBY: I have a relative who cannot make a statement without using vulgar or profane language. He says he has the right to use any kind of language...

DEAR ABBY: Several years ago, a guy I went with gave me a gold charm bracelet. I'll call him "Pete."

DEAR UN: I'd return the bracelet to Pete.

DEAR ABBY: I'm not being realistic because so many people know about my first marriage that someone is sure to tell him. However, I don't want Jimmy to know just yet.

DEAR ABBY: I'm not being realistic because so many people know about my first marriage that someone is sure to tell him. However, I don't want Jimmy to know just yet.

Charles M. Schultz PEANUTS: I will not create a disturbance in class. YOU WOULDN'T CARE TO HELP ME WITH MY HOMOGENEOUS SENTENCES WOULD YOU, MARGE? THAT WOULD BE DISHONEST, SURE. ACCEPT YOUR FURNISHMENT AND BE A BETTER PERSON FOR IT... I HAVEN'T MENTIONED THAT I HAVE MARRIED EVERY TIME SHE...

Mickey Finn - Morris Weiss: LOOK, FELLAS - YOU'RE NOT NAIVE. YOU KNOW THAT EVEN THE HIGHEST PUBLIC OFFICIALS GET PUBLIC OFFICIALS! WE'RE NOT HIGH UP THE LADDER. WE'RE JUST A FEW FEET ABOVE THE GROUND. WE DON'T TAKE BRIBES! C'MON, NOW! I'M NOT TALKING ABOUT NICKELS AND DIMES! HOW ABOUT BE THOUSANDS - FOR EACH OF YOU!

Priscilla's Pop - Al Vermeer: HERE YOU GO HOLLYWOOD! PRISCILLA! I'M NOT GOING ON! NO! NO! NOW THAT'S THAT GO B...?

Captain Easy - Crooks and Lawrence: AH-AH-AH! DON'T TOUCH THAT GUM! NOT YOU EITHER, SWEETIE-PIE! NOW, THEN - LET'S HAVE A COZY LITTLE THREE-CORNERED WHAT-ABOUT-A-CERTAIN EGYPTIAN MUMMY CASE!

Alley Oop - Dave Graue: DIDJAH GET TH' WATERS? RIGHT HERE, AN' I'LL CLEAN UP IN A JIFFY! DON'T WORRY, YOUR HIGH-BOY'S BEEN CLEANED UP IN A JIFFY! HEY! WHAT'S THINKING HERE? I DUNNO, TARI... BUT I THINK WE'RE IN TROUBLE!

The Flintstones - Hanna-Barbera Productions: REMEMBER, WE'RE SURVIVAL OF THE FITTEST - NOT SURVIVAL OF THE FATTEST!

Born Loser - Art Sansom: YOU CERTAINLY TOOK YOUR TIME GETTING HOME FROM THE OFFICE! IT WAS SUCH A NICE AFTERNOON, I DECIDED TO WALK.

This Funny World: BEWARE DOG

L'il Sport - Wirth: YOU SHOULD SEE WHAT YOU DID TO THE BARK OF THAT TREE!

1 2 F B 1 2